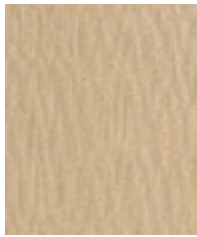
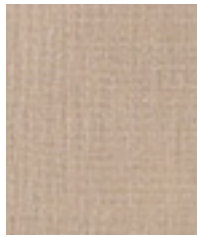




Haze



Shell



Nickel



Fennel



Moss



Cobalt



Midnight



Cocoa

Construction	Values	Test Method
Surface Composition	100% Polyurethane	
Backing Composition	100% Polyester	ASTM D 751-89
Finished Width	54" min.	ASTM D 751-89
Repeat	None	
Railroaded	No	
Put-up	30 yards	
Cleaning Code	W/S	

Performance	Minimum Values	Test Method
Grab Tensile	80 lbs./in. × 70 lbs./in. min.	ASTM D 5034-09
Trap Tear	15 lbs./in. × 15 lbs./in. min.	ASTM D 5587-07
Seam Strength	60 lbs./in. × 60 lbs./in. min.	ASTM D 1683-07A
Adhesion	4 lbs./in. × 4 lbs./in. min.	ASTM D 751-89
Stretch at 15# MD (warp) × CD (fill)	2% × 7%	ASTM D 751-89
Flex Resistance	50,000 cycles	ASTM D 2097-03
Blocking	No. 1 - Pass	Fed. Std. 191 A , 5872
Crock Resistance	Dry-4; Wet-4	AATCC 8
Wyzenbeek Abrasion	100,000 cycles, #10 Cotton Duck	ASTM D 4157-07
Hydrolysis Resistance	10 weeks	ISO 1419: 1995 E
UV Stability	150 hours	ASTM D 4329
Blue Dye Transfer Resistance	Dry-4-5; Wet-4-5	LP-463KC-04-03
Anti-Bacterial	Pass	AATCC 147-2004
Mildew Resistance	Pass	ASTM G-21

Flammability	Environmental	
California Technical Bulletin 117-2013, Sec. 1	Pass	1. No anti-microbial additives
IMO A.652(16)8.2	Pass	2. Does not contain PFAS, PFOA
NFPA 260	Pass	3. Prop 65 compliant
U.F.A.C. Class I	Pass	4. No chemical flame retardants, CA AB2998 compliant
		5. REACH, RoHS, and LEED compliant

Suitable Applications Contract, Healthcare, Hospitality, Residential

Cleaning and Disinfecting

Remove ordinary dirt and smudges with mild soap and water. A 10:1 ratio of water to bleach solution may be used as a disinfectant. Rinse the surface with clean water after disinfecting. Dry with a soft, lint-free cloth or towel. We recommend that you use Clorox Healthcare and Clorox Pro products to disinfect Mitchell products in commercial settings.



The Mitchell Group is a compatibility partner with Clorox Healthcare

The Mitchell Group
7040 N. Austin Avenue | Niles, IL 60714
847.647.7300 | mitchellfauxleathers.com