



Nickel



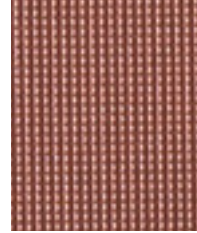
Topaz



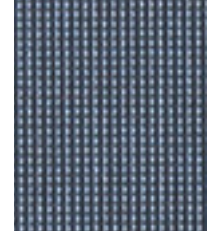
Burnt Umber



Olive



Rosewood



Caribbean



Charcoal

Construction	Values	Test Method
Surface Composition	100% Polyurethane	
Backing Composition	100% Polyester	ASTM D 751-89
Finished Width	54" min.	ASTM D 751-89
Repeat	None	
Railroaded	No	
Put-up	30 yards	
Cleaning Code	W/S	

Performance	Minimum Values	Test Method
Grab Tensile	80 lbs./in. x 60 lbs./in.	ASTM D 5034-09
Trap Tear	15 lbs./in. x 15 lbs./in.	ASTM D 5587-07
Seam Strength	45 lbs./in. x 35 lbs./in.	ASTM D 1683-07A
Adhesion	4 lbs./in. x 4 lbs./in.	ASTM D 3690-02
Stretch @ 15# (MDxCD)	2% x 6%	ASTM D 751-89
Flex Resistance	25,000 cycles	ASTM D 2097-91
Blocking	No. 1 Pass	Fed. Std. 191 A , 5872
Crock Resistance	Dry-4; Wet-4	AATCC 8
Wyzenbeek Abrasion	300,000 cycles, #10 Cotton Duck	ASTM D 4157-07
Hydrolysis Resistance	7 weeks	ISO 1419: 1995 E
UV Stability	150 hours	ASTM D 4329-05
Blue Dye Transfer Resistance	Dry-4-5; Wet-4-5	LP-463KC-04-03
Anti-Bacterial	Pass	AATCC 147-2004
Mildew Resistance	Pass	ASTM G-21

Flammability	Environmental	
California Technical Bulletin 117-2013, Sec. 1	Pass	1. No anti-microbial additives
IMO A.652(16)8.2	Pass	2. Does not contain PFAS, PFOA
NFPA 260	Pass	3. Prop 65 compliant
U.F.A.C. Class I	Pass	4. No chemical flame retardants, CA AB2998 compliant
		5. REACH, RoHS, and LEED compliant

**Suitable Applications** Contract, Healthcare, Hospitality, Residential

### Cleaning and Disinfecting

Remove ordinary dirt and smudges with mild soap and water. A 10:1 ratio of water to bleach solution may be used as a disinfectant. Rinse the surface with clean water after disinfecting. Dry with a soft, lint-free cloth or towel. We recommend that you use Clorox Healthcare and Clorox Pro products to disinfect Mitchell products in commercial settings.



The Mitchell Group is a compatibility partner with Clorox Healthcare

The Mitchell Group  
7040 N. Austin Avenue | Niles, IL 60714  
847.647.7300 | mitchellfauxleathers.com