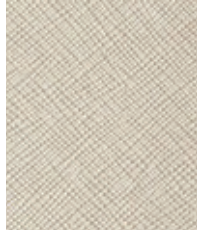




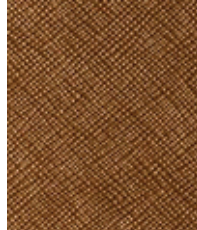
Pearl



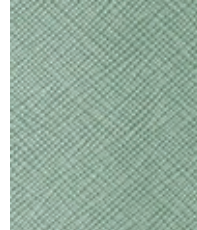
Crystal



Mushroom



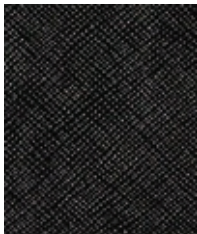
Copper



Mint



Midnight



Smoke

Construction

Construction	Values	Test Method
Surface Composition	100% Polyurethane	
Backing Composition	100% Polyester	ASTM D 751-06
Finished Width	54" min.	ASTM D 751-06
Repeat	None	
Railroaded	No	
Put-up	30 yards	
Cleaning Code	W/S	

Performance

Performance	Minimum Values	Test Method
Grab Tensile	80 lbs./in. × 80 lbs./in.	ASTM D 751-06
Trap Tear	15 lbs./in. × 15 lbs./in.	ASTM D 751-06
Seam Strength	40 lbs./in. x 35 lbs./in.	ASTM D 751-06
Adhesion	4 lbs./in. × 4 lbs./in.	ASTM D 751-06
Stretch @ 15# (MD×CD)	2% × 6%	ASTM D 751-06
Flex Resistance	25,000 cycles	ASTM D 2097-91
Blocking	No. 1 Pass	Fed. Std. 191 A , 5872
Crock Resistance	Dry-4; Wet-4	AATCC 8-2007
Wyzenbeek Abrasion	300,000 cycles, #10 Cotton Duck	ASTM D 4157-07
Hydrolysis Resistance	5 weeks	ASTM D 3690-02
	7 weeks	ISO 1419: 1995
UV Stability	150 hours (Grade 4)	ASTM D 4329-05
Blue Dye Transfer Resistance	Dry-4-5; Wet-4-5	LP-463KC-04-03
Anti-Bacterial	Pass	AATCC 147-2004
Mildew Resistance	Pass	ASTM G-21
Cold Crack (#5 roller)	-20°F	CFFA-6A

Flammability

California Technical Bulletin 117-2013, Sec. 1	Pass
FMVSS/CMVSS #302	Pass
IMO A.652(16)8.2	Pass
NFPA 260	Pass
U.F.A.C. Class I	Pass

Environmental

1. No anti-microbial additives
2. Does not contain PFAS, PFOA
3. Prop 65 compliant
4. No chemical flame retardants, CA AB2998 compliant
5. REACH, RoHS, and LEED compliant

Suitable Applications Contract, Healthcare, Hospitality, Residential

Cleaning and Disinfecting

Remove ordinary dirt and smudges with mild soap and water. A 10:1 ratio of water to bleach solution may be used as a disinfectant. Rinse the surface with clean water after disinfecting. Dry with a soft, lint-free cloth or towel. We recommend that you use Clorox Healthcare and Clorox Pro products to disinfect Mitchell products in commercial settings.



The Mitchell Group is a compatibility partner with Clorox Healthcare

The Mitchell Group
7040 N. Austin Avenue | Niles, IL 60714
847.647.7300 | mitchellfauxleathers.com