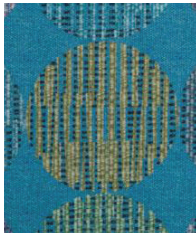




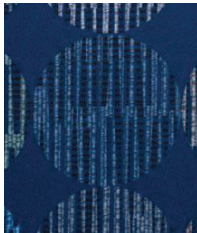
Foghorn



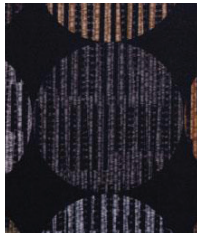
Harbor



Reef



Atlantic



Seven Seas

Construction

Surface Composition	100% Silicone
Backing Composition	100% Polyester
Finished Width	54" min.
Repeat	V: 9.0" / H: 9.0"
Railroaded	No
Put-up	30 yards
Cleaning Code	W/S

Test Method

ASTM D 751-06
ASTM D 751-06

Performance

Grab Tensile	200 lbs./in. x 200 lbs./in. min.
Trap Tear	30 lbs./in. x 30 lbs./in. min.
Seam Strength	90 lbs./in. x 90 lbs./in. min.
Adhesion	4 lbs./in. x 4 lbs./in. min.
Stretch @ 15# (MDxCD)	14% x 25%
Flex Resistance	100,000 Cycles
Blocking	No. 1 - Pass
Crock Resistance	Dry-5; Wet-5
Wyzenbeek Abrasion	500,000 cycles, #10 Cotton Duck
Colorfastness to Light	650 hours, Grade 4-5
Colorfastness to Water: Sea	Shade-5; Staining-5
Colorfastness to Water: Chlorinated Pool	4.8
Colorfastness to Perspiration	Acid-4.8; Alkaline-4.8
Mildew Resistance	Pass
Antibacterial Activity	Pass
Antifungal Activity	Pass
Blue Dye Transfer Resistance	Dry-4; Wet-3-4
Biocompatibility - Vitro Cytotoxicity	Pass
Biocompatibility - Irritation and Skin Sensitization	Pass
Chemical Cleaner Resistance	Pass
Cold Crack (Roller Method)	-40°F

Test Method

ASTM D 751-06
ASTM D 751-06
ASTM D 751-06
ASTM D 751-06
ASTM D 751-06
ASTM D 2097
FTMS 191A-TM5872
AATCC 8-2016
ASTM D 4157-13
ASTM D 4329-05
AATCC 106-2013
AATCC 162
AATCC 15
ASTM G-21
AATCC 147
AATCC 30, Test III
LP-463KC-04-03
ISO 10993-5-2009
ISO 10993-10-2010
ANSI BIFMA HCF 8.1-2017 Sections 6 & 7
CFFA-6a

Flammability

BS 5852 Crib 5	Pass
California Technical Bulletin 117-2013, Sec. 1	Pass
FMVSS/CMVSS #302	Pass
IMO 2010-Part 8 Sec. 3.1 & 3.2	Pass
NFPA 260 / NFPA 701	Pass
U.F.A.C. Class I	Pass

Environmental

1. No anti-microbial additives
2. Does not contain PFAS, PFOA
3. Prop 65 compliant
4. No chemical flame retardants, CA AB2998 compliant
5. REACH, RoHS, and LEED compliant

Suitable Applications Automotive, Contract, Healthcare, Hospitality

Cleaning and Disinfecting

Remove ordinary dirt and smudges with mild soap and water. A 10:1 ratio of water to bleach solution may be used as a disinfectant. Rinse the surface with clean water after disinfecting. Dry with a soft, lint-free cloth or towel. We recommend that you use Clorox Healthcare and Clorox Pro products to disinfect Mitchell products in commercial settings.



The Mitchell Group is a compatibility partner with Clorox Healthcare

The Mitchell Group
7040 N. Austin Avenue | Niles, IL 60714
847.647.7300 | mitchellfauxleathers.com