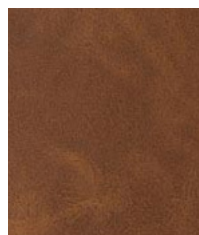
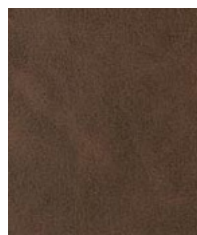




Smoke



Saddle Brown



Chocolate

Construction	Values	Test Method
Surface Composition	100% Polyurethane	
Backing Composition	60% Leather / 40% Polyester	ASTM D 751-06
Finished Width	54" Width	ASTM D 751-06
Put-up	30 yards	
Repeat	None	
Cleaning Code	W	
Railroaded	No	

Performance	Minimum Values	Test Method
Grab Tensile	80 lbs./in. × 70 lbs./in. min.	ASTM D 751-06
Trap Tear	18 lbs./in. × 15 lbs./in. min.	ASTM D 5733-99
Seam Strength	60 lbs./in. × 60 lbs./in. min.	ASTM D 751-06
Adhesion	4 lbs./in. × 4 lbs./in. min.	ASTM D 751-06
Stretch @ 15# (MD×CD)	2% × 7%	ASTM D 751-06
Blocking	No. 1 - Pass	Fed. Std. 191 A, 5872
Crock Resistance	Wet-4; Dry-4	AATCC 8-2005
Wyzenbeek Abrasion	100,000 cycles, #10 Cotton Duck	ASTM D 4157-02
Hydrolysis Resistance	5 weeks	ASTM D 3690-02
UV Stability	40 hours (no color change)	ASTM D 4329-05

Flammability	Environmental	
California Technical Bulletin 117-2013, Sec. 1	Pass	1. No anti-microbial additives
NFPA 260	Pass	2. Does not contain PFAS, PFOA
U.F.A.C. Class I	Pass	3. Prop 65 compliant
		4. No chemical flame retardants, CA AB2998 compliant
		5. REACH, RoHS, and LEED compliant

**Suitable Applications** Commercial, Residential

**Cleaning and Disinfecting**

Remove ordinary dirt and smudges with mild soap and water. A 10:1 ratio of water to bleach solution may be used as a disinfectant. Rinse the surface with clean water after disinfecting. Dry with a soft, lint-free cloth or towel. We recommend that you use Clorox Healthcare and Clorox Pro products to disinfect Mitchell products in commercial settings.



The Mitchell Group is a compatibility partner with Clorox Healthcare

The Mitchell Group  
 7040 N. Austin Avenue | Niles, IL 60714  
 847.647.7300 | mitchellfauxleathers.com