

White



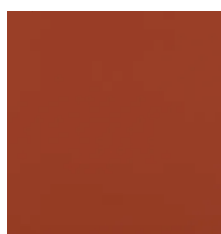
Cream



Driftwood



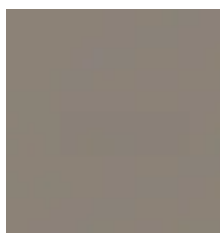
Sprout



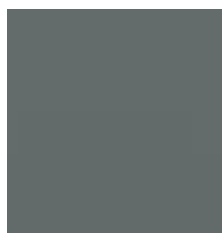
Copperpot



Ocean



Mocha



Mist



Sesame



Aegean



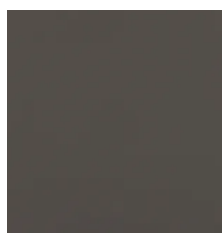
Cardinal



Saltwater



Moose



Gray



Dijon



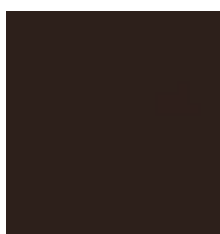
Teal



Burgundy



Blue Smoke



Chocolate



Basil



Autumn



Black



Marlin

| Technical Specs | Values | Test Method |
|---------------------|----------------|---------------|
| Surface Composition | Polyurethane | |
| Finished Width | 54" min. | ASTM D 751-06 |
| Backing Composition | 100% Polyester | ASTM D 751-06 |
| Put-up | 30 yards | |
| Repeat | None | |
| Cleaning Code | W/S | |
| Railroaded | No | |

| Performance | Values | Test Method |
|--------------------------------------|---------------------------------|------------------|
| Adhesion | 4 lbs./in. × 4 lbs./in. min. | ASTM D 751-06 |
| Grab Tensile | 80 lbs./in. x 120 lbs./in. | ASTM D 751-06 |
| Trap Tear | 45 lbs./in. × 50 lbs./in. min. | ASTM D 751-06 |
| Seam Strength | 45 lbs./in. × 110 lbs./in. min. | ASTM D 751-06 |
| Stretch at 15# MD (warp) × CD (fill) | 6% × 24% | ASTM D 751-06 |
| Flex Resistance | 25,000 cycles | ASTM D 2097-91 |
| Blocking | No. 1 - Pass | FTMS 191A-TM5872 |
| Crock Resistance | Dry: 4.5 / Wet: 4.5 | AATCC 8-2007 |
| Wyzenbeek Abrasion | 250,000 cycles, #10 Cotton Duck | ASTM D 4157-13 |
| Hydrolysis Resistance | 15 weeks | ISO 5423: 1992 E |
| UV Stability | 200 hours | ASTM D 4329-05 |
| Cold Crack (5# roller) | -40°F | CFFA-6A |

| Flammability | Environmental | |
|------------------|---------------|-------------------------------------|
| IMO A.652(16)8.2 | Pass | 1. No PFAS, PFOA |
| CA TB117-2013 | Pass | 2. No chemical flame retardants |
| NFPA 260 | Pass | 3. No persistent organic pollutants |
| U.F.A.C. Class I | Pass | 4. RoHS, REACH compliant |
| FMVSS/CMVSS #302 | Pass | 5. CA VOC 01350 |
| | | 6. No anti-microbial additives |

Suitable Applications Contract, Healthcare, Hospitality, Residential

Cleaning and Disinfecting

Remove ordinary dirt and smudges with mild soap and water. A 10:1 ratio of water to bleach solution may be used as a disinfectant. Rinse the surface with clean water after disinfecting. Dry with a soft, lint-free cloth or towel. We recommend that you use Clorox Healthcare and Clorox Pro products to disinfect Mitchell products in commercial settings.

