



Platinum



Pearl



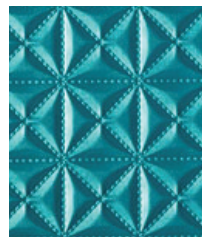
Pebble



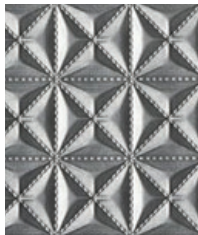
Quartz



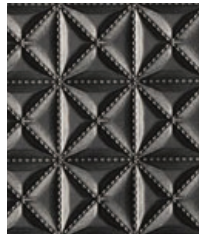
Cajun



Island



Smoke



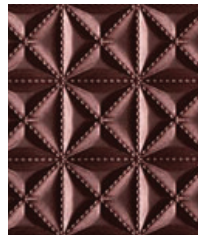
Bean



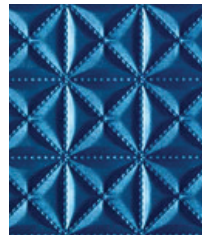
Copper



Bronze



Sable



Pacific



Black

Technical Specifications

	Values	Test Method
Surface Composition	100% Polycarbonate	
Finished Width	54" min.	
Backing Composition	50% Rayon, 50% Polyester	ASTM D 751-06
Put-up	30 yards	ASTM D 751-06
Repeat	None	
Cleaning Code	WS	
Railroaded	No	

Performance

	Values	Test Method
Adhesion	4 lbs./in. × 4 lbs./in. min.	ASTM D 751-06
Grab Tensile	150 lbs./in. × 130 lbs./in. min.	ASTM D 751-06
Trap Tear	20 lbs./in. × 15 lbs./in. min.	ASTM D 751-06
Seam Strength	85 lbs./in. × 80 lbs./in. min.	ASTM D 751-06
Stretch at 27# MD (warp) × CD (fill)	4% × 18%	SAE J855, 2002
Flex Resistance	25,000 cycles	ASTM D 2097-91
Blocking	No. 1 - PASS	FTMS 191A-TM5872
Crock Resistance	Wet-5; Dry-5	AATCC 8-2007
Wyzenbeek Abrasion (#10 Cotton Duck)	100,000 cycles	ASTM D 4157-13
Hydrolysis Resistance	15 weeks	ASTM D 3690-02
	15 weeks	ISO 1419: 1995 (E)
UV Stability	1000 hours	ASTM D 4329-05
Blue Dye Transfer Resistance	Dry-4-5; Wet-4-5	LP-463KC-04-03
Cold Crack (5# roller)	-20°F	CFFA-6A

Flammability

IMO A.652(16)8.2	Pass
CA TB117-2013	Pass
NFPA 260	Pass
U.F.A.C. Class I	Pass
FMVSS/CMVSS #302	Pass

Environmental

1. No PVC, plasticizers, phthalates, stabilizers or heavy metals
2. No chemical flame retardants
3. No persistent organic pollutants
4. RoHS, REACH compliant
5. No anti-microbial additives

Cleaning and Disinfecting

Remove ordinary dirt and smudges with mild soap and water. A 10:1 ratio of water to bleach solution may be used as a disinfectant. Rinse the surface with clean water after disinfecting. Dry with a soft, lint-free cloth or towel. We recommend that you use Clorox Healthcare products VersaSure wipes and Hydrogen Peroxide wipes to disinfect Sta-Kleen Polycarbonate products in commercial settings.



Sta-Kleen Polycarbonate is a compatibility partner with Clorox Healthcare.

