



Straw



Stone



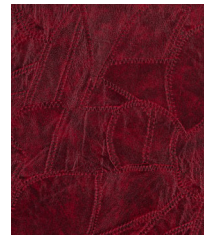
Cantaloupe



Side Saddle



Cactus



Sangria



Storm



Mesquite

Construction	Values	Test Method
Surface Composition	PVC	ASTM D 751-06
Finished Width	54" min.	ASTM D 751-06
Backing Composition	100% Polyester	ASTM D 751-06
Repeat	None	ASTM D 751-06
Railroaded	No	
Put-up	30 yards	
Cleaning Code	W/S	

Performance	Values	Test Method
Grab Tensile	110 lbs./in. × 110 lbs./in. min.	ASTM D 751-06
Trap Tear	35 lbs./in. × 35 lbs./in. min.	ASTM D 751-06
Seam Strength	35 lbs./in. × 35 lbs./in. min.	ASTM D 751-06
Adhesion	4 lbs./in. × 4 lbs./in. min.	ASTM D 751-06
Stretch @ 15# (MD×CD)	7% × 30%	ASTM D 751-06
Flex Resistance	25,000 Cycles	ASTM D 2097-91
Blocking	No. 1 - Pass	FTMS 191A-TM5872
Crock Resistance	Dry - 4-5; Wet - 4-5	AATCC 8-2016
Wyzenbeek Abrasion	100,000 cycles, #10 cotton duck	ASTM D 4157-13
Colorfastness to Light	250 hours, Grade 4-5	ASTM D 4329-05
Blue Dye Transfer Resistance	Dry - 4-5; Wet - 4	Chrysler Method: LP-463KC-04-03

Flammability	
California Technical Bulletin 117-2013, Sec. 1	Pass
FMVSS/CMVSS #302	Pass
IMO A.652(16)8.2	Pass
NFPA 260	Pass
U.F.A.C. Class I	Pass

Environmental
1. No anti-microbial additives
2. Does not contain PFAS, PFOA
3. Prop 65 compliant
4. No chemical flame retardants, CA AB2998 compliant
5. RoHS compliant – Phthalate free

Suitable Applications Contract, Healthcare, Hospitality, Residential

Cleaning and Disinfecting

Remove ordinary dirt and smudges with mild soap and water. A 10:1 ratio of water to bleach solution may be used as a disinfectant. Rinse the surface with clean water after disinfecting. Dry with a soft, lint-free cloth or towel. We recommend that you use Clorox Healthcare and Clorox Pro products to disinfect Mitchell products in commercial settings.

