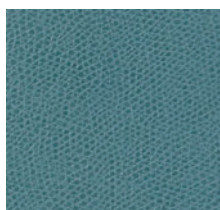




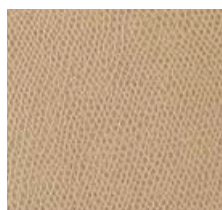
Chocolate



Cream



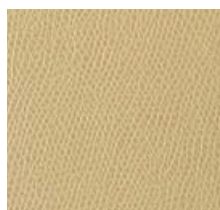
Aegean



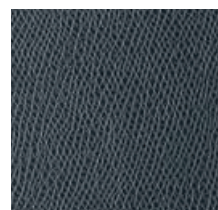
Almond



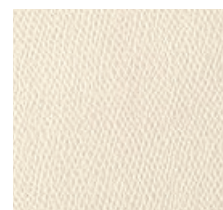
Brown Sugar



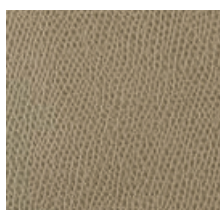
Butter



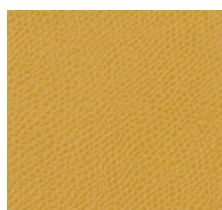
Cadet



Canvas



Desert



Dijon



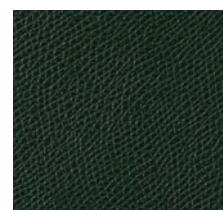
Dove



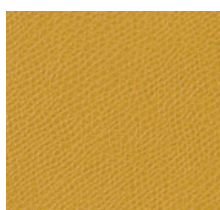
Ecru



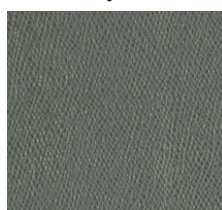
Field



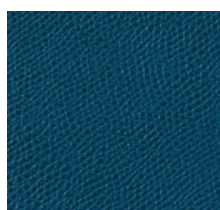
Forest



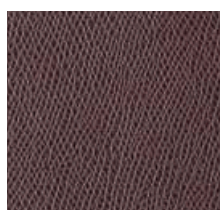
Honey



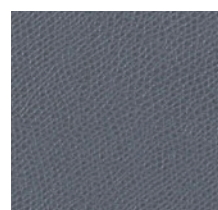
Iris



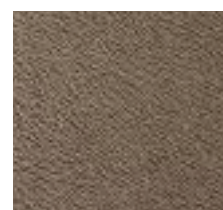
Marlin



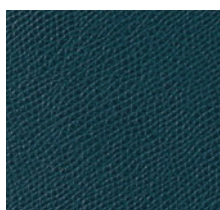
Merlot



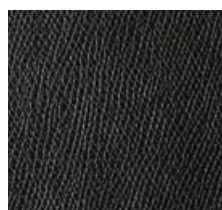
Metal



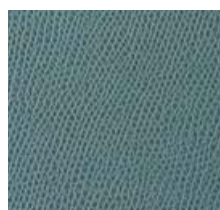
Mink



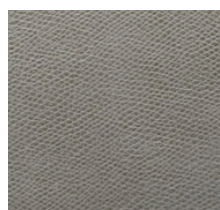
Ocean



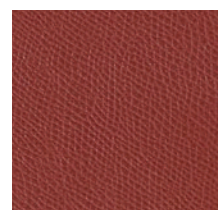
Onyx



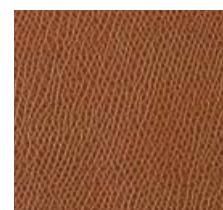
Patriot



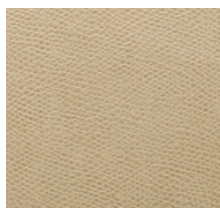
Pavement



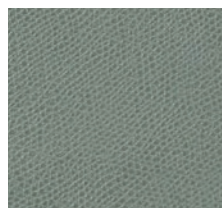
Penny



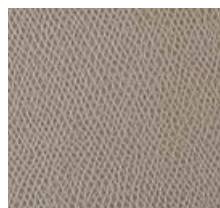
Rattan



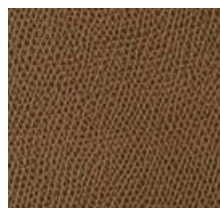
Sand



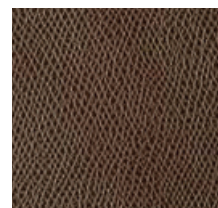
Sea Water



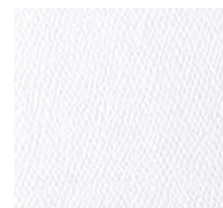
Taupe



Toffee



Truffle



White

Construction

Surface Composition
Backing Composition
Finished Width
Repeat
Railroaded
Put-up
Cleaning Code
Stain Resistant

Values

100% Polyurethane
100% Polyester
54" min.
None
No
30 yards
W/S
Yes

Test Method

ASTM D 751-06
ASTM D 751-06

Performance

Grab Tensile
Trap Tear
Seam Strength
Adhesion
Stretch @ 15# (MD×CD)
Flex Resistance
Blocking
Crock Resistance
Wyzenbeek Abrasion (#10 Cotton Duck)
Hydrolysis Resistance
UV Stability
Blue Dye Transfer Resistance
Cold Crack

Values

50 lbs./in. × 50 lbs./in. min.
15 lbs./in. × 15 lbs./in. min.
40 lbs./in. × 40 lbs./in. min.
4 lbs./in. × 4 lbs./in. min.
5% × 10%
25,000 cycles
No. 1 - Pass
Dry - 4; Wet - 4
100,000 cycles
24 weeks
150 hours
Dry - 4-5; Wet - 4-5
-20°F

Test Method

ASTM D 751-06
ASTM D 751-06
ASTM D 751-06
ASTM D 751-06
ASTM D 751-06
ASTM D 2097-91
Fed. Std. 191A-TM5872
AATCC 8-2013
ASTM D 4157-13
ISO 1419: 1995 E
ASTM D 4329-05
LP-463KC-04-03
CFFA-6A

Flammability

California Technical Bulletin 117-2013, Sec. 1 Pass
IMO A.652(16)8.2 Pass
NFPA 260 Pass
U.F.A.C. Class I Pass

Environmental

1. No anti-microbial additives
2. Does not contain PFAS, PFOA
3. Prop 65 compliant
4. No chemical flame retardants, CA AB2998 compliant
5. REACH, RoHS, and LEED compliant

Suitable Applications Contract, Healthcare, Hospitality, Residential

Cleaning and Disinfecting

Remove ordinary dirt and smudges with mild soap and water. A 10:1 ratio of water to bleach solution may be used as a disinfectant. Rinse the surface with clean water after disinfecting. Dry with a soft, lint-free cloth or towel. We recommend that you use Clorox Healthcare and Clorox Pro products to disinfect Mitchell products in commercial settings.



The Mitchell Group is a compatibility partner with Clorox Healthcare

The Mitchell Group
7040 N. Austin Avenue | Niles, IL 60714
847.647.7300 | mitchellfauxleathers.com