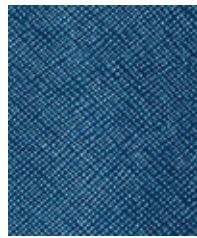




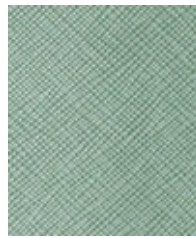
Copper



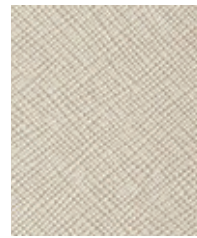
Crystal



Midnight



Mint



Mushroom



Pearl



Smoke

**Construction**

	<b>Values</b>	<b>Test Method</b>
Surface Composition	100% Polyurethane	
Backing Composition	100% Polyester	ASTM D 751-06
Finished Width	54" min.	ASTM D 751-06
Repeat	None	
Railroaded	No	
Put-up	30 yards	
Cleaning Code	W/S	

**Performance**

	<b>Values</b>	<b>Test Method</b>
Grab Tensile	80 lbs./in. x 80 lbs./in.	ASTM D 751-06
Trap Tear	15 lbs./in. x 15 lbs./in.	ASTM D 751-06
Seam Strength	40 lbs./in. x 35 lbs./in.	ASTM D 751-06
Adhesion	4 lbs./in. x 4 lbs./in.	ASTM D 751-06
Stretch @ 15# (MDxCD)	2% x 6%	ASTM D 751-06
Flex Resistance	25,000 cycles	ASTM D 2097-91
Blocking	No. 1 Pass	Fed. Std. 191 A , 5872
Crock Resistance	Dry-4; Wet-4	AATCC 8-2007
Wyzenbeek Abrasion	300,000 cycles, #10 Cotton Duck	ASTM D 4157-07
Hydrolysis Resistance	19 weeks	ISO 1419: 1995 E
UV Stability	150 hours (Grade 4)	ASTM D 4329-05
Blue Dye Transfer Resistance	Dry-4-5; Wet-4-5	LP-463KC-04-03
Cold Crack (#5 roller)	-20°F	CFFA-6A

**Flammability**

California Technical Bulletin 117-2013, Sec. 1	Pass
FMVSS/CMVSS #302	Pass
IMO A.652(16)8.2	Pass
NFPA 260	Pass
U.F.A.C. Class I	Pass

**Environmental**

1. No anti-microbial additives
2. Does not contain PFAS, PFOA
3. Prop 65 compliant
4. No chemical flame retardants, CA AB2998 compliant
5. REACH, RoHS, and LEED compliant

**Suitable Applications** Contract, Healthcare, Hospitality, Residential

**Cleaning and Disinfecting**

Remove ordinary dirt and smudges with mild soap and water. A 10:1 ratio of water to bleach solution may be used as a disinfectant. Rinse the surface with clean water after disinfecting. Dry with a soft, lint-free cloth or towel. We recommend that you use Clorox Healthcare and Clorox Pro products to disinfect Mitchell products in commercial settings.



The Mitchell Group is a compatibility partner with Clorox Healthcare

The Mitchell Group  
7040 N. Austin Avenue | Niles, IL 60714  
847.647.7300 | mitchellfauxleathers.com