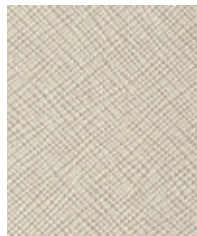




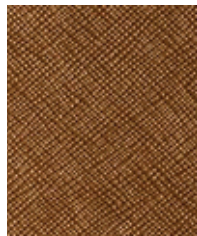
Pearl



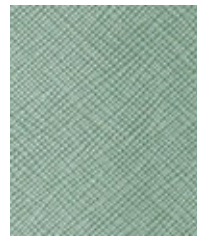
Crystal



Mushroom



Copper



Mint



Midnight



Smoke

Construction	Values	Test Method
Surface Composition	100% Polyurethane	
Backing Composition	100% Polyester	ASTM D 751-06
Finished Width	54" min.	ASTM D 751-06
Repeat	None	
Railroaded	No	
Put-up	30 yards	
Cleaning Code	W/S	

Performance	Values	Test Method
Grab Tensile	80 lbs./in. × 80 lbs./in.	ASTM D 751-06
Trap Tear	15 lbs./in. × 15 lbs./in.	ASTM D 751-06
Seam Strength	40 lbs./in. x 35 lbs./in.	ASTM D 751-06
Adhesion	4 lbs./in. × 4 lbs./in.	ASTM D 751-06
Stretch @ 15# (MD×CD)	2% × 6%	ASTM D 751-06
Flex Resistance	25,000 cycles	ASTM D 2097-91
Blocking	No. 1 Pass	Fed. Std. 191 A , 5872
Crock Resistance	Dry-4; Wet-4	AATCC 8-2007 ASTM
Wyzenbeek Abrasion	300,000 cycles, #10 Cotton Duck	D 4157-07
Hydrolysis Resistance	19 weeks	ISO 1419: 1995
UV Stability	150 hours (Grade 4)	ASTM D 4329-05
Blue Dye Transfer Resistance	Dry-4-5; Wet-4-5	LP-463KC-04-03
Anti-Bacterial	Pass	AATCC 147-2004
Mildew Resistance	Pass	ASTM G-21
Cold Crack (#5 roller)	-20°F	CFFA-6A

Flammability	Environmental	
California Technical Bulletin 117-2013, Sec. 1	Pass	1. No anti-microbial additives
FMVSS/CMVSS #302	Pass	2. Does not contain PFAS, PFOA
IMO A.652(16)8.2	Pass	3. Prop 65 compliant
NFPA 260	Pass	4. No chemical flame retardants, CA AB2998 compliant
U.F.A.C. Class I	Pass	5. REACH, RoHS, and LEED compliant

Suitable Applications Contract, Healthcare, Hospitality, Residential

Cleaning and Disinfecting

Remove ordinary dirt and smudges with mild soap and water. A 10:1 ratio of water to bleach solution may be used as a disinfectant. Rinse the surface with clean water after disinfecting. Dry with a soft, lint-free cloth or towel. We recommend that you use Clorox Healthcare and Clorox Pro products to disinfect Mitchell products in commercial settings.



The Mitchell Group is a compatibility partner with Clorox Healthcare

The Mitchell Group
7040 N. Austin Avenue | Niles, IL 60714
847.647.7300 | mitchellfauxleathers.com