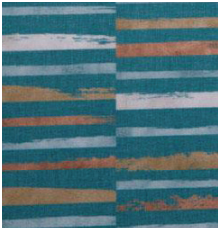




Dark  
Chocolate



Fog



Ocean  
Avenue



Orange

### Construction

Surface Composition	100% Silicone
Backing Composition	100% Polyester
Finished Width	54" min.
Repeat	V: 16" / H: 13.5"
Railroaded	No
Put-up	25 yards
Cleaning Code	W/S

### Test Method

ASTM D 751-06
ASTM D 751-06

### Performance

Grab Tensile	200 lbs./in. × 200 lbs./in. min.
Trap Tear	30 lbs./in. × 30 lbs./in. min.
Seam Strength	90 lbs./in. × 90 lbs./in. min.
Adhesion	4 lbs./in. × 4 lbs./in. min.
Stretch @ 15# (MD×CD)	14% × 25%
Flex Resistance	100,000 Cycles
Blocking	No. 1 - Pass
Crock Resistance	Dry-5; Wet-5
Wyzenbeek Abrasion	500,000 cycles, #10 Cotton Duck
Colorfastness to Light	650 hours, Grade 4-5
Colorfastness to Water: Sea	Shade-5; Staining-5
Colorfastness to Water: Chlorinated Pool	4.8
Colorfastness to Perspiration	Acid-4.8; Alkaline-4.8
Mildew Resistance	Pass
Antibacterial Activity	Pass
Antifungal Activity	Pass
Blue Dye Transfer Resistance	Dry-4; Wet-3-4
Biocompatibility - Vitro Cytotoxicity	Pass
Biocompatibility - Irritation and Skin Sensitization	Pass
Chemical Cleaner Resistance	Pass
Cold Crack (Roller Method)	-40°F

### Test Method

ASTM D 751-06
ASTM D 751-06
ASTM D 751-06
ASTM D 751-06
ASTM D 751-06
ASTM D 2097
FTMS 191A-TM5872
AATCC 8-2016
ASTM D 4157-13
ASTM D 4329-05
AATCC 106-2013
AATCC 162
AATCC 15
ASTM G-21
AATCC 147
AATCC 30, Test III
LP-463KC-04-03
ISO 10993-5-2009
ISO 10993-10-2010
ANSI BIFMA HCF 8.1-2017 Sections 6 & 7
CFFA-6A

### Flammability

BS 5852 Crib 5	Pass
California Technical Bulletin 117-2013, Sec. 1	Pass
FMVSS/CMVSS #302	Pass
IMO 2010-Part 8 Sec. 3.1 & 3.2	Pass
NFPA 260 / NFPA 701	Pass
U.F.A.C. Class I	Pass

### Environmental

1. No anti-microbial additives
2. Does not contain PFAS, PFOA
3. Prop 65 compliant
4. No chemical flame retardants, CA AB2998 compliant
5. REACH, RoHS, and LEED compliant

### Suitable Applications Automotive, Contract, Healthcare, Hospitality

### Cleaning and Disinfecting

Remove ordinary dirt and smudges with mild soap and water. A 10:1 ratio of water to bleach solution may be used as a disinfectant. Rinse the surface with clean water after disinfecting. Dry with a soft, lint-free cloth or towel. We recommend that you use Clorox Healthcare and Clorox Pro products to disinfect Mitchell products in commercial settings.

