



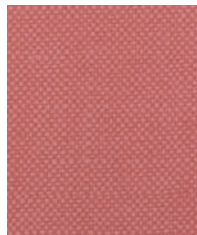
Pebble



New Sand



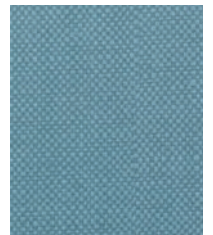
Chia



Persimmon



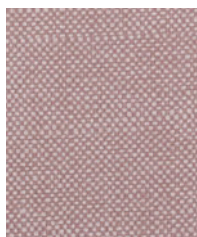
Spa



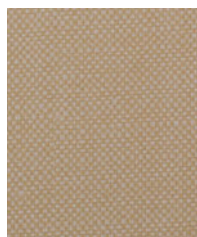
Sea Green



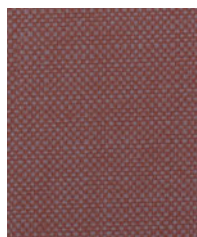
Flint



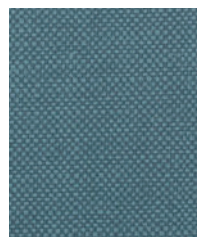
Clay



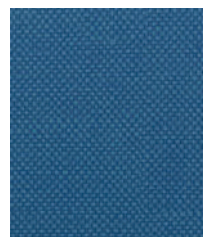
Khaki



Spice



Maya Blue



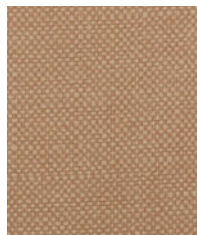
Marlin



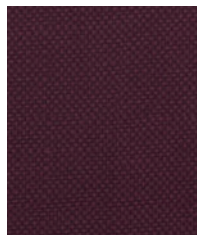
Coyote



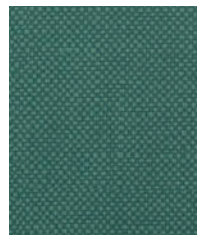
Driftwood



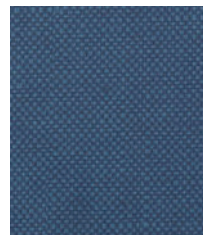
Buckskin



Aztec



Pine



Denim

Construction	Values	Test Method
Surface Composition	100% Polycarbonate	
Backing Composition	50% Rayon, 50% Polyester	ASTM D 751-89
Finished Width	54" min.	ASTM D 751-89
Put-up	30 yards	
Repeat	None	
Cleaning Code	W/S	
Railroaded	No	

Performance	Values	Test Method
Adhesion	4 lbs. × 4 lbs.	ASTM D 751-89
Breaking Strength	80 lbs. × 60 lbs.	ASTM D 751-89
Trap Tear	15 lbs. × 15 lbs.	ASTM D 751-89
Seam Strength	40 lbs. × 40 lbs.	ASTM D 751-89
Stretch at 15# MD (warp) ×CD (fill)	8% × 12%	ASTM D 5034-09
Flex Resistance	25,000 cycles	ASTM D 2097-91
Blocking	No. 1 - PASS	FTMS 191A, 5872
Seam Slippage	25 lbs. × 25 lbs.	ASTM D 4034
Crock Resistance	Dry-4; Wet-4	AATCC 8-2001
Wyzenbeek Abrasion	300,000 cycles, #10 Cotton Duck	ASTM D 4157-07
Hydrolysis Resistance	24 weeks	SO 5423: 1992
UV Stability	1000 hours	AATCC 16-2004
Cold Crack (5# roller)	-20°F	CFFA-6A

Flammability	
California Technical Bulletin 117-2013, Sec. 1	Pass
CMVSS #302	Pass
IMO A.652(16)8.2	Pass
NFPA 260	Pass
U.F.A.C. Class I	Pass

Environmental
1. No anti-microbial additives
2. Does not contain PFAS, PFOA
3. Prop 65 compliant
4. No chemical flame retardants, CA AB2998 compliant
5. REACH, RoHS, and LEED compliant

**Suitable Applications** Contract, Healthcare, Hospitality, Residential

**Cleaning and Disinfecting**

Remove ordinary dirt and smudges with mild soap and water. A 10:1 ratio of water to bleach solution may be used as a disinfectant. Rinse the surface with clean water after disinfecting. Dry with a soft, lint-free cloth or towel. We recommend that you use Clorox Healthcare and Clorox Pro products to disinfect Mitchell products in commercial settings.



The Mitchell Group is a compatibility partner with Clorox Healthcare

The Mitchell Group  
7040 N. Austin Avenue | Niles, IL 60714  
847.647.7300 | mitchellfauxleathers.com