



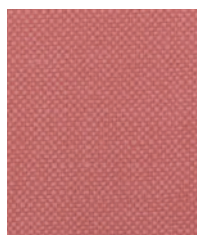
Pebble



New Sand



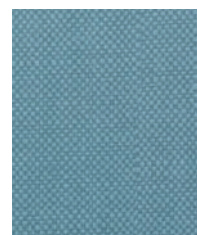
Chia



Persimmon



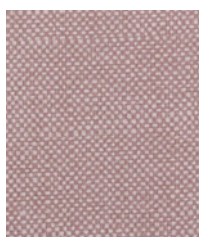
Spa



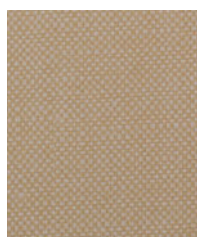
Sea Green



Flint



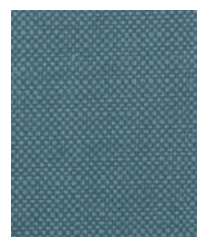
Clay



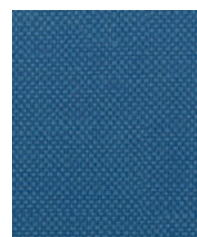
Khaki



Spice



Maya Blue



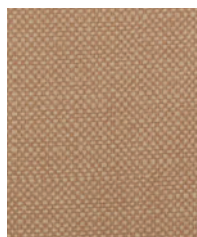
Marlin



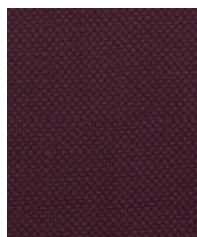
Coyote



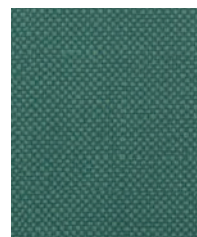
Driftwood



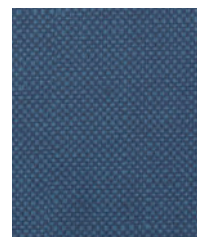
Buckskin



Aztec



Pine



Denim

Construction

Surface Composition
Backing Composition
Finished Width
Put-up
Repeat
Cleaning Code
Railroaded

Values

100% Polycarbonate
50% Rayon, 50% Polyester
54" min.
30 yards
None
W/S
No

Test Method

ASTM D 751-89
ASTM D 751-89

Performance

Adhesion
Breaking Strength
Trap Tear
Seam Strength
Stretch at 15# MD (warp) ×CD (fill)
Flex Resistance
Blocking
Seam Slippage
Crock Resistance
Wyzenbeek Abrasion
Hydrolysis Resistance
UV Stability
Cold Crack (5# roller)

Values

4 lbs. × 4 lbs.
80 lbs. × 60 lbs.
15 lbs. × 15 lbs.
40 lbs. × 40 lbs.
8% × 12%
25,000 cycles
No. 1 - PASS
25 lbs. × 25 lbs.
Dry-4; Wet-4
300,000 cycles, #10 Cotton Duck
15 weeks
1000 hours
-20°F

Test Method

ASTM D 751-89
ASTM D 751-89
ASTM D 751-89
ASTM D 751-89
ASTM D 5034-09
ASTM D 2097-91
FTMS 191A, 5872
ASTM D 4034
AATCC 8-2001
ASTM D 4157-07
ASTM D 3690-02; ISO 5423: 1992 (E)
AATCC 16-2004
CFFA-6A

Flammability

California Technical Bulletin 117-2013, Sec. 1	Pass
CMVSS #302	Pass
IMO A.652(16)8.2	Pass
NFPA 260	Pass
U.F.A.C. Class I	Pass

Environmental

1. No anti-microbial additives
2. Does not contain PFAS, PFOA
3. Prop 65 compliant
4. No chemical flame retardants, CA AB2998 compliant
5. REACH, RoHS, and LEED compliant

Suitable Applications Contract, Healthcare, Hospitality, Residential

Cleaning and Disinfecting

Remove ordinary dirt and smudges with mild soap and water. A 10:1 ratio of water to bleach solution may be used as a disinfectant. Rinse the surface with clean water after disinfecting. Dry with a soft, lint-free cloth or towel. We recommend that you use Clorox Healthcare and Clorox Pro products to disinfect Mitchell products in commercial settings.



The Mitchell Group is a compatibility partner with Clorox Healthcare

The Mitchell Group
7040 N. Austin Avenue | Niles, IL 60714
847.647.7300 | mitchellfauxleathers.com