



Plaster



Pearl



Tan



Cork



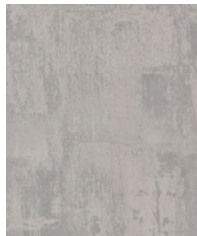
Meadow



Haze



Smoke



Nickel



Taupe



Clay



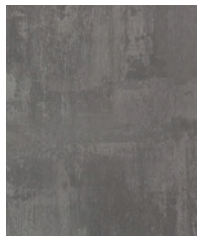
Basil



Teal



Chestnut



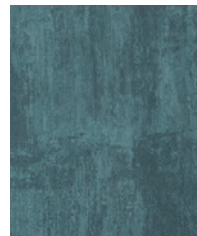
Metal



Pecan



Sienna



Aqua



River

Construction

Surface Composition
Finished Width
Backing Composition
Put-up
Repeat
Cleaning Code
Railroaded

Values

100% Polycarbonate
54" min.
50% Rayon, 50% Polyester
30 yards
None
WS
No

Test Method

ASTM D 751-06
ASTM D 751-06

Performance

Adhesion
Grab Tensile
Trap Tear
Seam Strength
Stretch at 15# MD (warp) xCD (fill)
Flex Resistance
Blocking
Crock Resistance
Wyzenbeek Abrasion (#10 Cotton Duck)
Hydrolysis Resistance
Colorfastness to Light
Blue Dye Transfer Resistance
Cold Crack (5# roller)

Values

4 lbs./in. x 4 lbs./in. min. 150
lbs./in. x 130 lbs./in. min. 20
lbs./in. x 15 lbs./in. min. 85
lbs./in. x 80 lbs./in. min. 4% x
18%
25,000 cycles
No. 1 - PASS
Wet-5; Dry-5
300,000 cycles
24 weeks
1000 hours
Dry-4-5; Wet-4-5
-20°F

Test Method

ASTM D 751-06
ASTM D 751-06
ASTM D 751-06
ASTM D 751-06
SAE J855, 2002
ASTM D 2097-91
FTMS 191A-TM5872
AATCC 8-2007
ASTM D 4157-13
ISO 1419: 1995
ASTM D 4329-05
LP-463KC-04-03
CFFA-6A

Flammability

California Technical Bulletin 117-2013, Sec. 1 Pass
FMVSS/CMVSS #302 Pass
IMO A.652(16)8.2 Pass
NFPA 260 Pass
U.F.A.C. Class I Pass

Environmental

1. No anti-microbial additives
2. Does not contain PFAS, PFOA
3. Prop 65 compliant
4. No chemical flame retardants, CA AB2998 compliant
5. REACH, RoHS, and LEED compliant

Suitable Applications Contract, Healthcare, Hospitality, Residential

Cleaning and Disinfecting

Remove ordinary dirt and smudges with mild soap and water. A 10:1 ratio of water to bleach solution may be used as a disinfectant. Rinse the surface with clean water after disinfecting. Dry with a soft, lint-free cloth or towel. We recommend that you use Clorox Healthcare and Clorox Pro products to disinfect Mitchell products in commercial settings.



The Mitchell Group is a compatibility partner with Clorox Healthcare

The Mitchell Group
7040 N. Austin Avenue | Niles, IL 60714
847.647.7300 | mitchellfauxleathers.com