







Oyster



Seashore



Autumn



Kiwi



Kalahari



Stone Blue



Smoke



Moth



Cream



Seaside Blue



Orange



Sky



Cement



Beige



Chocolate



Sea Water



Indian Summer



Oxford Blue



Gray



Falcon



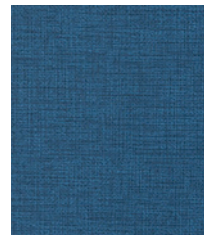
Meadow



Grotto



Popsicle



True Blue



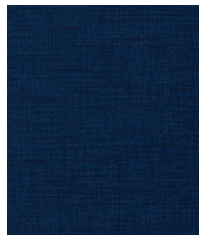
Leaden



Lentil



Olive



Navy



Glamour

**Construction**

| Construction        | Values                   | Test Method   |
|---------------------|--------------------------|---------------|
| Surface Composition | 100% Polycarbonate       |               |
| Finished Width      | 54" min.                 |               |
| Backing Composition | 50% Rayon, 50% Polyester | ASTM D 751-06 |
| Put-up              | 30 yards                 | ASTM D 751-06 |
| Repeat              | None                     |               |
| Cleaning Code       | WS                       |               |
| Railroaded          | No                       |               |

**Performance**

| Performance                          | Values                           | Test Method      |
|--------------------------------------|----------------------------------|------------------|
| Adhesion                             | 4 lbs./in. × 4 lbs./in. min.     | ASTM D 751-06    |
| Grab Tensile                         | 150 lbs./in. × 130 lbs./in. min. | ASTM D 751-06    |
| Trap Tear                            | 20 lbs./in. × 15 lbs./in. min.   | ASTM D 751-06    |
| Seam Strength                        | 85 lbs./in. × 80 lbs./in. min.   | ASTM D 751-06    |
| Stretch at 27# MD (warp) ×CD (fill)  | 4% × 18%                         | SAE J855, 2002   |
| Flex Resistance                      | 25,000 cycles                    | ASTM D 2097-91   |
| Blocking                             | No. 1 - PASS                     | FTMS 191A-TM5872 |
| Crock Resistance                     | Wet-5; Dry-5                     | AATCC 8-2007     |
| Wyzenbeek Abrasion (#10 Cotton Duck) | 500,000 cycles                   | ASTM D 4157-13   |
| Hydrolysis Resistance                | 24 weeks                         | ISO 1419: 1995   |
| Colorfastness to Light               | 1000 hours                       | ASTM D 4329-05   |
| Blue Dye Transfer Resistance         | Dry-4-5; Wet-4-5                 | LP-463KC-04-03   |
| Cold Crack (5# roller)               | -20°F                            | CFFA-6A          |

**Flammability**

|  |      |
|--|------|
| California Technical Bulletin 117-2013, Sec. 1 | Pass |
| FMVSS/CMVSS #302                               | Pass |
| IMO A.652(16)8.2                               | Pass |
| NFPA 260                                       | Pass |
| U.F.A.C. Class I                               | Pass |

**Environmental**

1. No anti-microbial additives
2. Does not contain PFAS, PFOA
3. Prop 65 compliant
4. No chemical flame retardants, CA AB2998 compliant
5. REACH, RoHS, and LEED compliant
6. CFFA Healthcare-201 Certified

**Suitable Applications** Contract, Healthcare, Hospitality, Residential

**Cleaning and Disinfecting**

Remove ordinary dirt and smudges with mild soap and water. A 10:1 ratio of water to bleach solution may be used as a disinfectant. Rinse the surface with clean water after disinfecting. Dry with a soft, lint-free cloth or towel. We recommend that you use Clorox Healthcare and Clorox Pro products to disinfect Mitchell products in commercial settings.

