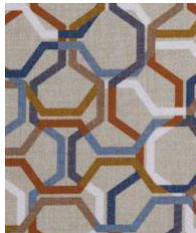


Foghorn



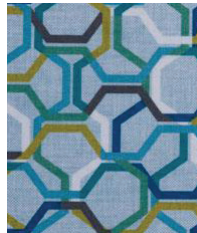
Stone



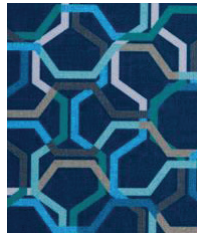
Sesame



Clay



Linen



Armada

Construction	Values	Test Method
Surface Composition	100% Silicone	
Backing Composition	100% Polyester	ASTM D 751-06
Finished Width	54" min.	ASTM D 751-06
Repeat	None	
Railroaded	No	
Put-up	25 yards	
Cleaning Code	W/S	
Performance	Values	Test Method
Grab Tensile	200 lbs./in. × 200 lbs./in. min.	ASTM D 751-06
Trap Tear	30 lbs./in. × 30 lbs./in. min.	ASTM D 751-06
Seam Strength	90 lbs./in. × 90 lbs./in. min.	ASTM D 751-06
Adhesion	4 lbs./in. × 4 lbs./in. min.	ASTM D 751-06
Stretch @ 15# (MD×CD)	14% × 25%	ASTM D 751-06
Flex Resistance	100,000 Cycles	ASTM D 2097
Blocking	No. 1 - Pass	FTMS 191A-TM5872
Crock Resistance	Dry-5; Wet-5	AATCC 8-2016
Wyzenbeek Abrasion	500,000 cycles, #10 Cotton Duck	ASTM D 4157-13
Colorfastness to Light	650 hours, Grade 4-5	ASTM D 4329-05
Colorfastness to Water: Sea	Shade-5; Staining-5	AATCC 106-2013
Colorfastness to Water: Chlorinated Pool	4.8	AATCC 162
Colorfastness to Perspiration	Acid-4.8; Alkaline-4.8	AATCC 15
Mildew Resistance	Pass	ASTM G-21
Antibacterial Activity	Pass	AATCC 147
Antifungal Activity	Pass	AATCC 30, Test III
Blue Dye Transfer Resistance	Dry-4; Wet-3-4	LP-463KC-04-03
Biocompatibility - Vitro Cytotoxicity	Pass	ISO 10993-5-2009
Biocompatibility - Irritation and Skin Sensitization	Pass	ISO 10993-10-2010
Chemical Cleaner Resistance	Pass	ANSI BIFMA HCF 8.1-2017 Sections 6 & 7
Cold Crack (Roller Method)	-40°F	CFFA-6a

Flammability

BS 5852 Crib 5	Pass
California Technical Bulletin 117-2013, Sec. 1	Pass
FMVSS/CMVSS #302	Pass
IMO 2010-Part 8 Sec. 3.1 & 3.2	Pass
NFPA 260 / NFPA 701	Pass
U.F.A.C. Class I	Pass

Environmental

1. No anti-microbial additives
2. Does not contain PFAS, PFOA
3. Prop 65 compliant
4. No chemical flame retardants, CA AB2998 compliant
5. REACH, RoHS, and LEED compliant

Suitable Applications Automotive, Contract, Healthcare, Hospitality

Cleaning and Disinfecting

Remove ordinary dirt and smudges with mild soap and water. A 10:1 ratio of water to bleach solution may be used as a disinfectant. Rinse the surface with clean water after disinfecting. Dry with a soft, lint-free cloth or towel. We recommend that you use Clorox Healthcare and Clorox Pro products to disinfect Mitchell products in commercial settings.



The Mitchell Group is a compatibility partner with Clorox Healthcare

The Mitchell Group
7040 N. Austin Avenue | Niles, IL 60714
847.647.7300 | mitchellfauxleathers.com