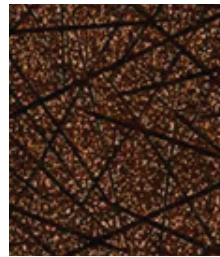


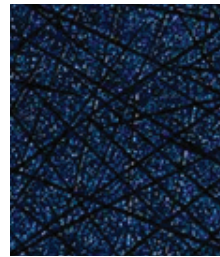
Alloy



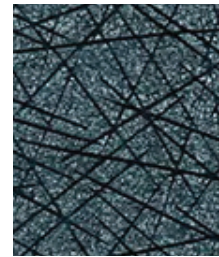
Brass



Bronze



Cobalt



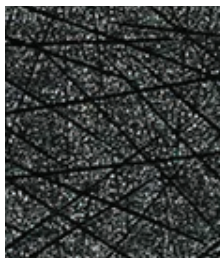
Platinum



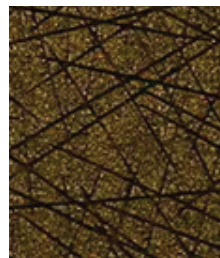
Quartz



Rose



Tungsten



Vegas Gold

Construction	Values	Test Method
Surface Composition	100% Silicone	
Backing Composition	100% Polyester	ASTM D 751-06
Finished Width	54" min.	ASTM D 751-06
Repeat	None	
Railroaded	No	
Put-up	25 yards	
Cleaning Code	W/S	

Performance	Values	Test Method
Grab Tensile	100 lbs./in. × 100 lbs./in. min.	ASTM D 751-06
Trap Tear	20 lbs./in. × 20 lbs./in. min.	ASTM D 751-06
Seam Strength	65 lbs./in. × 65 lbs./in. min.	ASTM D 751-06
Adhesion	4 lbs./in. × 4 lbs./in. min.	ASTM D 751-06
Stretch @ 15# (MD×CD)	12% × 20%	ASTM D 751-06
Flex Resistance	100,000 Cycles	ASTM D 2097
Blocking	No. 1 - Pass	FTMS 191A-TM5872
Crock Resistance	Dry-5; Wet-5	AATCC 8-2016
Wyzenbeek Abrasion	100,000 cycles, #10 Cotton Duck	ASTM D 4157-13
Colorfastness to Light	400 hours	ASTM D 4329-05
Mildew Resistance	Pass	ASTM G-21
Antibacterial Activity	Pass	AATCC 147
Cold Crack (Roller Method)	-40°F	CFFA-6a

**Flammability**

California Technical Bulletin 117-2013, Sec. 1	Pass
FMVSS/CMVSS #302	Pass
IMO 210 Part 8, Sections 3.1	Pass
NFPA 260 / NFPA 701	Pass
U.F.A.C. Class I	Pass

**Environmental**

1. No solvents, polyvinyl chloride, plasticizers, phthalates, stabilizers, heavy metals or Bisphenol A
2. No persistent organic pollutants. No formaldehyde. No toxic by-products.
3. No chemical flame retardants
4. RoHS, REACH and LEED compliant
5. Passes CA 01350 VOC Emissions test

**Suitable Applications** Healthcare, Hospitality, Contract

**Cleaning and Disinfecting**

Remove ordinary dirt and smudges with mild soap and water. A 10:1 ratio of water to bleach solution may be used as a disinfectant. Rinse the surface with clean water after disinfecting. Dry with a soft, lint-free cloth or towel. We recommend that you use Clorox Healthcare and Clorox Pro products to disinfect Mitchell products in commercial settings.



The Mitchell Group is a compatibility partner with Clorox Healthcare

The Mitchell Group  
7040 N. Austin Avenue | Niles, IL 60714  
847.647.7300 | mitchellfauxleathers.com