



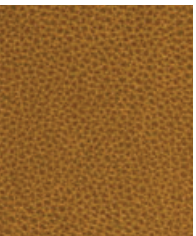
Chalk



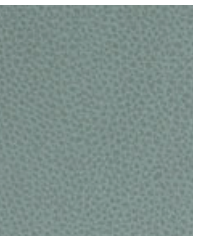
Stone



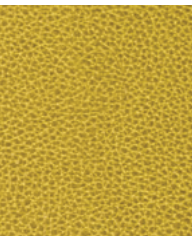
Fawn



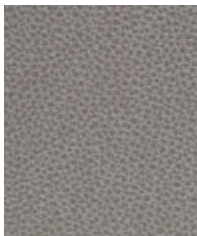
Brown Sugar



Mist



Moss



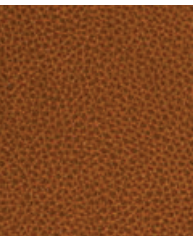
Steel



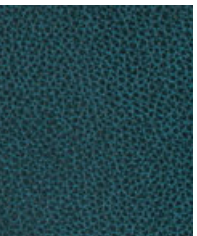
Latte



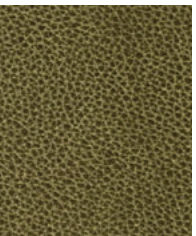
Field



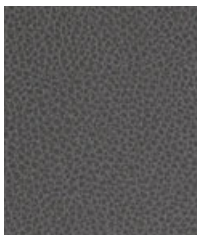
Autumn



Aquamarine



Lily



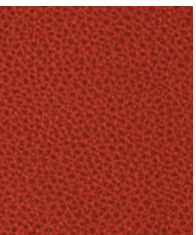
Shale



Cinder



Earth



Flame



Dark Sky



Brunette



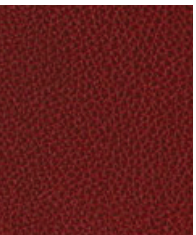
Twilight



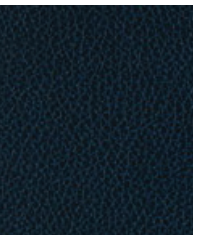
Dark
Chocolate



Port



Merlot



Atlantic

Construction

Surface Composition
Backing Composition
Finished Width
Repeat
Railroaded
Put-up
Cleaning Code

Values

100% Silicone
100% Polyester
54" min.
None
No
25 yards
W/S

Test Method

ASTM D 751-06
ASTM D 751-06

Performance

Grab Tensile
Trap Tear
Seam Strength
Adhesion
Stretch @ 15# (MD×CD)
Flex Resistance
Blocking
Crock Resistance
Wyzenbeek Abrasion
Colorfastness to Light
Colorfastness to Water: Sea
Colorfastness to Water: Chlorinated Pool
Colorfastness to Perspiration
Mildew Resistance
Antibacterial Activity
Antifungal Activity
Blue Dye Transfer Resistance
Biocompatibility - Vitro Cytotoxicity
Biocompatibility - Irritation and Skin Sensitization
Chemical Cleaner Resistance
Cold Crack (Roller Method)

Values

200 lbs./in. × 200 lbs./in. min.
30 lbs./in. × 30 lbs./in. min.
90 lbs./in. × 90 lbs./in. min.
4 lbs./in. × 4 lbs./in. min.
14% × 25%
100,000 Cycles
No. 1 - Pass
Dry-5; Wet-5
200,000 cycles, #10 Cotton Duck
2,000 hours, Grade 4
Shade-5; Staining-5
4.8
Acid-4.8; Alkaline-4.8
Pass
Pass
Pass
Dry-4; Wet-3-4
Pass
Pass
Pass
-40°F

Test Method

ASTM D 751-06
ASTM D 751-06
ASTM D 751-06
ASTM D 751-06
ASTM D 751-06
ASTM D 2097
FTMS 191A-TM5872
AATCC 8-2016
ASTM D 4157-13
ASTM D 4329-05
AATCC 106-2013
AATCC 162
AATCC 15
ASTM G-21
AATCC 147
AATCC 30, Test III
LP-463KC-04-03
ISO 10993-5-2009
ISO 10993-10-2010
ANSI BIFMA HCF 8.1-2017 Sections 6 & 7
CFFA-6a

Flammability

BS 5852 Crib 5
California Technical Bulletin 117-2013, Sec. 1
FMVSS/CMVSS #302
IMO 2010-Part 8 Sec. 3.1 & 3.2
NFPA 260 / NFPA 701
U.F.A.C. Class I

Pass
Pass
Pass
Pass
Pass
Pass

Environmental

1. No anti-microbial additives
2. Does not contain PFAS, PFOA
3. Prop 65 compliant
4. No chemical flame retardants, CA AB2998 compliant
5. REACH, RoHS, and LEED compliant

Suitable Applications Automotive, Contract, Healthcare, Hospitality

Cleaning and Disinfecting

Remove ordinary dirt and smudges with mild soap and water. A 10:1 ratio of water to bleach solution may be used as a disinfectant. Rinse the surface with clean water after disinfecting. Dry with a soft, lint-free cloth or towel. We recommend that you use Clorox Healthcare and Clorox Pro products to disinfect Mitchell products in commercial settings.

