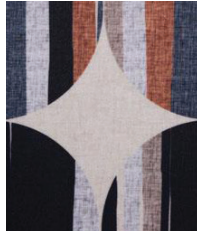




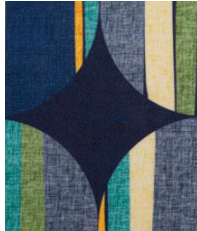
Ash



Kiwi



Sandbar



Dark Blue

**Construction**

Surface Composition  
Backing Composition  
Finished Width  
Repeat  
Railroaded  
Put-up  
Cleaning Code

**Values**

100% Silicone  
100% Polyester  
54" min.  
V: 18" / H: 18"  
No  
25 yards  
W/S

**Test Method**

ASTM D 751-06  
ASTM D 751-06

**Performance**

Grab Tensile  
Trap Tear  
Seam Strength  
Adhesion  
Stretch @ 15# (MD×CD)  
Flex Resistance  
Blocking  
Crock Resistance  
Wyzenbeek Abrasion  
Colorfastness to Light  
Colorfastness to Water: Sea  
Colorfastness to Water: Chlorinated Pool  
Colorfastness to Perspiration  
Mildew Resistance  
Antibacterial Activity  
Antifungal Activity  
Blue Dye Transfer Resistance  
Biocompatibility - Vitro Cytotoxicity  
Biocompatibility - Irritation and Skin Sensitization  
Chemical Cleaner Resistance  
Cold Crack (Roller Method)

**Values**

200 lbs./in. × 200 lbs./in. min.  
30 lbs./in. × 30 lbs./in. min.  
90 lbs./in. × 90 lbs./in. min.  
4 lbs./in. × 4 lbs./in. min.  
14% × 25%  
100,000 Cycles  
No. 1 - Pass  
Dry-5; Wet-5  
200,000 cycles, #10 Cotton Duck  
650 hours, Grade 4-5  
Shade-5; Staining-5  
4.8  
Acid-4.8; Alkaline-4.8  
Pass  
Pass  
Pass  
Dry-4; Wet-3-4  
Pass  
Pass  
Pass  
Pass

**Test Method**

ASTM D 751-06  
ASTM D 751-06  
ASTM D 751-06  
ASTM D 751-06  
ASTM D 751-06  
ASTM D 2097  
FTMS 191A-TM5872  
AATCC 8-2016  
ASTM D 4157-13  
ASTM D 4329-05  
AATCC 106-2013  
AATCC 162  
AATCC 15  
ASTM G-21  
AATCC 147  
AATCC 30, Test III  
LP-463KC-04-03  
ISO 10993-5-2009  
ISO 10993-10-2010  
ANSI BIFMA HCF 8.1-2017 Sections 6 & 7  
CFFA-6a

**Flammability**

BS 5852 Crib 5  
California Technical Bulletin 117-2013, Sec. 1  
FMVSS/CMVSS #302  
IMO 2010-Part 8 Sec. 3.1 & 3.2  
NFPA 260 / NFPA 701  
U.F.A.C. Class I

Pass  
Pass  
Pass  
Pass  
Pass  
Pass

**Environmental**

1. No anti-microbial additives
2. Does not contain PFAS, PFOA
3. Prop 65 compliant
4. No chemical flame retardants, CA AB2998 compliant
5. REACH, RoHS, and LEED compliant

**Suitable Applications** Automotive, Contract, Healthcare, Hospitality

**Cleaning and Disinfecting**

Remove ordinary dirt and smudges with mild soap and water. A 10:1 ratio of water to bleach solution may be used as a disinfectant. Rinse the surface with clean water after disinfecting. Dry with a soft, lint-free cloth or towel. We recommend that you use Clorox Healthcare and Clorox Pro products to disinfect Mitchell products in commercial settings.

