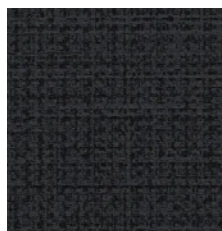
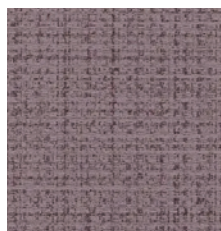




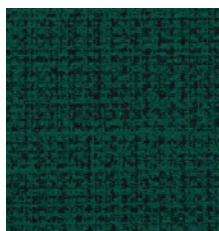
Annie



Arsenic



Aubergine



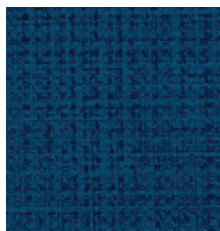
Castleton



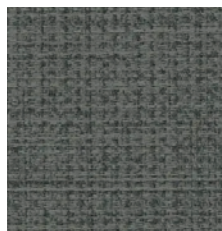
Cool Grey



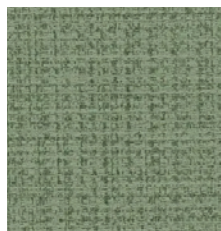
Cornflower



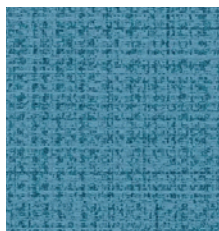
Denim



Falcon



Laurel



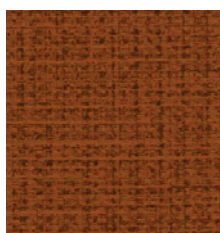
Ole Blue Eyes



Pale



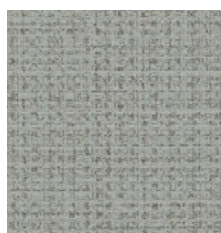
Papaya



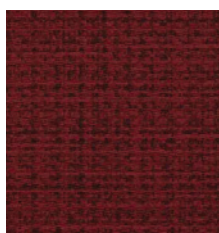
Penny



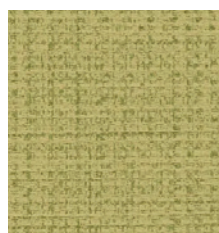
Raffia



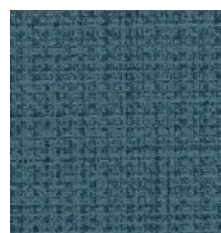
Rhino



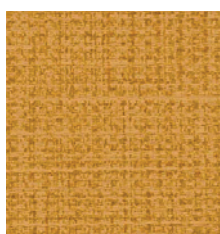
Ruby



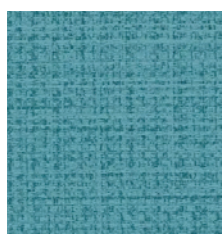
Shrek



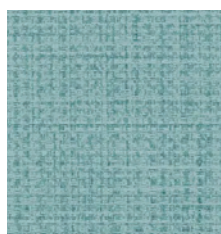
Spruce



Sunflower



Turkish Blue



Vintage Teal

Construction	Values	Test Method
Chemical Coating Face	94% Bio-Attributed PU build on Susterra® PDO and 6% Silicone Protection	
Top Finish Protection	Hydro-Sil™ proprietary silicone-based finish for ink and stain resistance	
Backing Composition	100% GRS Transaction Certified Polyester	ASTM D 751-06
Finished Width	54" min.	
Put-up	30 yards	ASTM D 751-06
Repeat	None	
Cleaning Code	W/S	
Performance	Values	Test Method
Adhesion	4 lbs./in. × 4 lbs./in. min.	ASTM D 751-06
Grab Tensile	100 lbs./in. × 180 lbs./in. min.	ASTM D 751-06
Trap Tear	25 lbs./in. × 25 lbs./in. min.	ASTM D 751-06
Seam Strength	60 lbs./in. × 70 lbs./in. min.	ASTM D 751-06
Stretch at 27# MD (warp) × CD (fill)	2% × 9%	SAE J855, 2002
Flex Resistance	25,000 cycles	ASTM D 2097-91
Blocking	No. 1 - PASS	FTMS 191A-TM5872
Crock Resistance	Dry Grade: 4.5 / Wet Grade: 4.5	AATCC 8-2007
Wyzenbeek Abrasion	500,000 cycles, #10 Cotton Duck	ASTM D 4157-13
Hydrolysis Resistance	24 weeks	ISO 5423: 1992 E
UV Stability	200 hours	ASTM D 4329-05
Cold Crack (5# roller)	-40°F	CFFA-6A

Environmental

No PVC, plasticizers, phthalates, formaldehyde, stabilizers, or heavy metals	No halogenated FR Chemicals - CAL AB2998 compliant
No persistent organic pollutants (POPs)	Conflict mineral free
No DMF or DMFA	Prop 65 compliant and LBC Red List compliant
Zero chemical solvents	CAL 01350 VOC compliant / Low VOCs
No ozone-depleting chemicals	RoHS, REACH compliant; LEED - prequalified
No anti-microbial additives	ASTM D6866 verified biobased inputs
Biocide, BPA, and TRIS Free	Meets CFFA 201 testing requirements

Flammability

CA TB117-2013	Pass	NFPA 260	Pass
IMO A.652(16)8.2	Pass	U.F.A.C. Class I	Pass

Suitable Applications Contract, Healthcare, Hospitality, Residential

Cleaning and Disinfecting

Remove ordinary dirt and smudges with mild soap and water. A 10:1 ratio of water to bleach solution may be used as a disinfectant. Rinse the surface with clean water after disinfecting. Dry with a soft, lint-free cloth or towel. We recommend you use Clorox Healthcare and Clorox Pro products to disinfect Mitchell products in commercial settings.



The Mitchell Group is a compatibility partner with Clorox Healthcare



The Mitchell Group
7040 N. Austin Avenue | Niles, IL 60714
847.647.7300 | mitchellfauxleathers.com