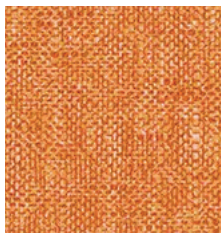


Aegean



Apricot



Dark Sky



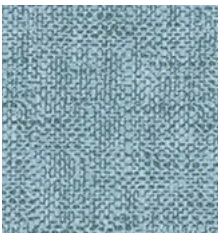
Fog



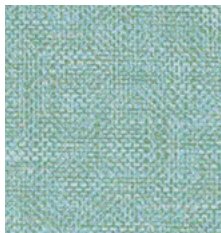
Harvest



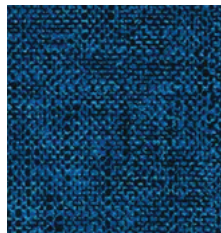
India Ink



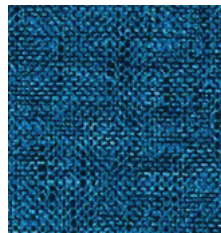
Inlet



Maya Blue



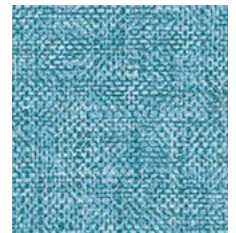
Midnight



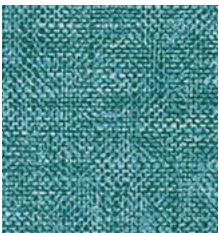
Ocean



Pacific



Sea Mist



Sea Green



Shell



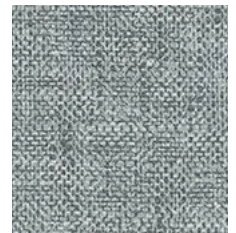
Silver Pine



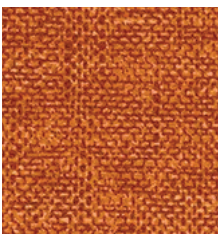
Soot



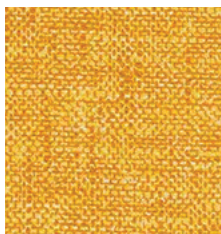
Spa



Steel



Sumac



Sunshine

| Construction | Values | Test Method |
|---------------------|--|---------------|
| Content | 45% Polyurethane, 55% Recycled Polyester | |
| Backing Composition | 100% Global Recycled Standard Polyester | ASTM D 751-06 |
| Finished Width | 54" min. | |
| Put-up | 30 yards | ASTM D 751-06 |
| Repeat | None | |
| Cleaning Code | W/S | |

| Performance | Values | Test Method |
|--------------------------------------|---------------------------------|------------------|
| Adhesion | 4 lbs./in. × 4 lbs./in. min. | ASTM D 751-06 |
| Grab Tensile | 80 lbs./in. × 120 lbs./in. min. | ASTM D 751-06 |
| Trap Tear | 45 lbs./in. × 50 lbs./in. min. | ASTM D 751-06 |
| Seam Strength | 45 lbs./in. × 110 lbs./in. min. | ASTM D 751-06 |
| Stretch at 27# MD (warp) × CD (fill) | 6% × 24% | SAE J855, 2002 |
| Flex Resistance | 25,000 cycles | ASTM D 2097-91 |
| Blocking | No. 1 - PASS | FTMS 191A-TM5872 |
| Crock Resistance | Dry: 4.5 / Wet: 4.5 | AATCC 8-2007 |
| Wyzenbeek Abrasion | 250,000 cycles, #10 Cotton Duck | ASTM D 4157-13 |
| Hydrolysis Resistance | 15 weeks | ISO 5423: 1992 E |
| UV Stability | 200 hours | ASTM D 4329-05 |
| Cold Crack (5# roller) | -40°F | CFFA-6A |

Environmental

| | |
|--|--|
| No PVC, plasticizers, phthalates, formaldehyde, stabilizers, or heavy metals | No halogenated FR Chemicals - CAL AB2998 compliant |
| No persistent organic pollutants (POPs) | Conflict mineral free |
| No DMF or DMFA | Prop 65 compliant |
| Zero chemical solvents | LBC Red List compliant |
| No ozone-depleting chemicals | CAL 01350 VOC compliant/low VOCs |
| No anti-microbial additives | LEED - prequalified |
| Biocide, BPA, and TRIS Free | RoHS, REACH compliant |

Flammability

| | | | |
|------------------|------|------------------|------|
| CA TB117-2013 | Pass | NFPA 260 | Pass |
| FMVSS/CMVSS #302 | Pass | U.F.A.C. Class I | Pass |
| IMO A.652(16)8.2 | Pass | | |

Suitable Applications Contract, Healthcare, Hospitality, Residential

Cleaning and Disinfecting

Remove ordinary dirt and smudges with mild soap and water. A 10:1 ratio of water to bleach solution may be used as a disinfectant. Rinse the surface with clean water after disinfecting. Dry with a soft, lint-free cloth or towel. We recommend you use Clorox Healthcare and Clorox Pro products to disinfect Mitchell products in commercial settings.



The Mitchell Group is a compatibility partner with Clorox Healthcare



The Mitchell Group
7040 N. Austin Avenue | Niles, IL 60714
847.647.7300 | mitchellfauxleathers.com