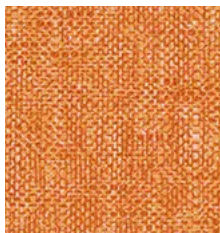




Aegean



Apricot



Dark Sky



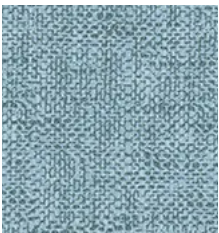
Fog



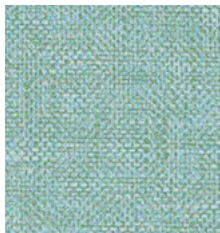
Harvest



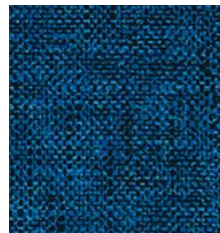
India Ink



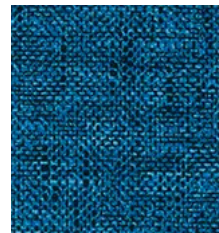
Inlet



Maya Blue



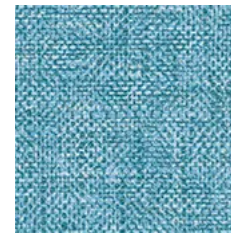
Midnight



Ocean



Pacific



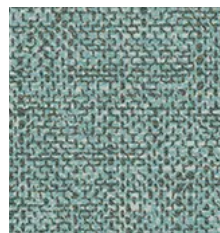
Sea Mist



Sea Green



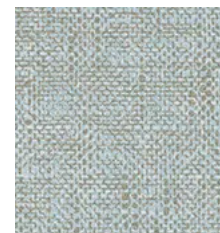
Shell



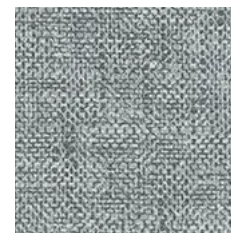
Silver Pine



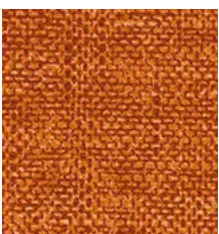
Soot



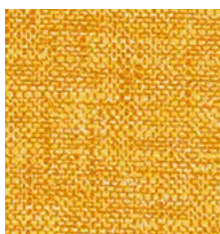
Spa



Steel



Sumac



Sunshine

**Construction**

Chemical Coating Face  
 Top Finish Protection  
 Backing Composition  
 Finished Width  
 Put-up  
 Repeat  
 Cleaning Code

**Values**

94% Bio-Attributed PU build on Susterra® PDO and 6% Silicone Protection  
 Hydro-Sil™ proprietary silicone-based finish for ink and stain resistance  
 100% GRS Transaction Certified Polyester  
 54" min.  
 30 yards  
 None  
 W/S

**Test Method**

ASTM D 751-06  
 ASTM D 751-06

**Performance**

Adhesion  
 Grab Tensile  
 Trap Tear  
 Seam Strength  
 Stretch at 27# MD (warp) × CD (fill)  
 Flex Resistance  
 Blocking  
 Crock Resistance  
 Wyzenbeek Abrasion  
 Hydrolysis Resistance  
 UV Stability  
 Cold Crack (5# roller)

**Values**

4 lbs./in. × 4 lbs./in. min.  
 100 lbs./in. × 180 lbs./in. min.  
 25 lbs./in. × 25 lbs./in. min.  
 60 lbs./in. × 70 lbs./in. min.  
 2% × 9%  
 25,000 cycles  
 No. 1 - PASS  
 Dry Grade: 4.5 / Wet Grade: 4.5  
 500,000 cycles, #10 Cotton Duck  
 24 weeks  
 200 hours  
 -40°F

**Test Method**

ASTM D 751-06  
 ASTM D 751-06  
 ASTM D 751-06  
 ASTM D 751-06  
 SAE J855, 2002  
 ASTM D 2097-91  
 FTMS 191A-TM5872  
 AATCC 8-2007  
 ASTM D 4157-13  
 ISO 1419: 1995  
 ASTM D 4329-05  
 CFFA-6A

**Environmental**

No PVC, plasticizers, phthalates, formaldehyde, stabilizers, or heavy metals  
 No persistent organic pollutants (POPs)  
 No DMF or DMFA  
 Zero chemical solvents  
 No ozone-depleting chemicals  
 No anti-microbial additives  
 Biocide, BPA, and TRIS Free

No halogenated FR Chemicals - CAL AB2998 compliant  
 Conflict mineral free  
 Prop 65 compliant and LBC Red List compliant  
 CAL 01350 VOC compliant / Low VOCs  
 RoHS, REACH compliant; LEED - prequalified  
 ASTM D6866 verified biobased inputs  
 Meets CFFA 201 testing requirements

**Flammability**

CA TB117-2013	Pass	NFPA 260	Pass
IMO A.652(16)8.2	Pass	U.F.A.C. Class I	Pass

**Suitable Applications** Contract, Healthcare, Hospitality, Residential

**Cleaning and Disinfecting**

Remove ordinary dirt and smudges with mild soap and water. A 10:1 ratio of water to bleach solution may be used as a disinfectant. Rinse the surface with clean water after disinfecting. Dry with a soft, lint-free cloth or towel. We recommend you use Clorox Healthcare and Clorox Pro products to disinfect Mitchell products in commercial settings.



The Mitchell Group is a compatibility partner with Clorox Healthcare



The Mitchell Group  
 7040 N. Austin Avenue | Niles, IL 60714  
 847.647.7300 | mitchellfauxleathers.com