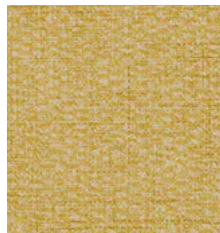




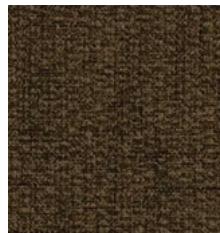
Ashville



Brown Bear



Bumblebee



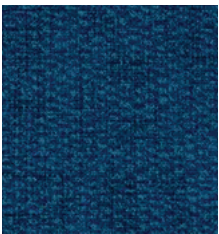
Cacao



Dolce



Ecrú



Indigo



Oh Baby



Oolong



Peanut



Pickle



Pistachio



Powder Blue



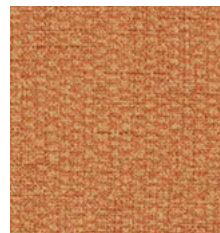
Pumpkin



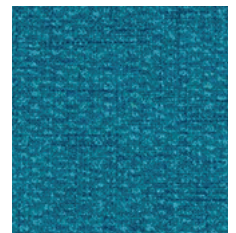
Saffron



Saltillo



Tangelo



Turkish



Umber

Construction	Values	Test Method
Content	45% Polyurethane, 55% Recycled Polyester	
Backing Composition	100% Global Recycled Standard Polyester	ASTM D 751-06
Finished Width	54" min.	
Put-up	30 yards	ASTM D 751-06
Repeat	None	
Cleaning Code	W/S	

Performance	Values	Test Method
Adhesion	4 lbs./in. × 4 lbs./in. min.	ASTM D 751-06
Grab Tensile	80 lbs./in. × 120 lbs./in. min.	ASTM D 751-06
Trap Tear	45 lbs./in. × 50 lbs./in. min.	ASTM D 751-06
Seam Strength	45 lbs./in. × 110 lbs./in. min.	ASTM D 751-06
Stretch at 27# MD (warp) × CD (fill)	6% × 24%	SAE J855, 2002
Flex Resistance	25,000 cycles	ASTM D 2097-91
Blocking	No. 1 - PASS	FTMS 191A-TM5872
Crock Resistance	Dry: 4.5 / Wet: 4.5	AATCC 8-2007
Wyzenbeek Abrasion	250,000 cycles, #10 Cotton Duck	ASTM D 4157-13
Hydrolysis Resistance	24 weeks	ISO 1419
UV Stability	200 hours	ASTM D 4329-05
Cold Crack (5# roller)	-40°F	CFFA-6A

Environmental

No PVC, plasticizers, phthalates, formaldehyde, stabilizers, or heavy metals	No halogenated FR Chemicals - CAL AB2998 compliant
No persistent organic pollutants (POPs)	Conflict mineral free
No DMF or DMFA	Prop 65 compliant
Zero chemical solvents	LBC Red List compliant
No ozone-depleting chemicals	CAL 01350 VOC compliant/low VOCs
No anti-microbial additives	LEED - prequalified
Biocide, BPA, and TRIS Free	RoHS, REACH compliant

Flammability

CA TB117-2013	Pass	NFPA 260	Pass
FMVSS/CMVSS #302	Pass	U.F.A.C. Class I	Pass
IMO A.652(16)8.2	Pass		

Suitable Applications Contract, Healthcare, Hospitality, Residential

Cleaning and Disinfecting

Remove ordinary dirt and smudges with mild soap and water. A 10:1 ratio of water to bleach solution may be used as a disinfectant. Rinse the surface with clean water after disinfecting. Dry with a soft, lint-free cloth or towel. We recommend you use Clorox Healthcare and Clorox Pro products to disinfect Mitchell products in commercial settings.



The Mitchell Group is a compatibility partner with Clorox Healthcare



The Mitchell Group
7040 N. Austin Avenue | Niles, IL 60714
847.647.7300 | mitchellfauxleathers.com