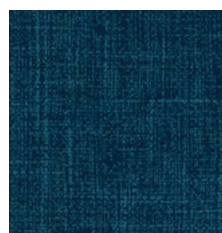




Aqua



Beige



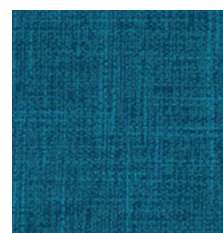
Blue Print



Cayenne



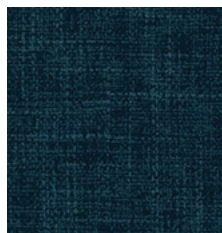
Clay



Denim



Gray



Ink



Linen



Maple



Marigold



Mineral



Mocha



Orange



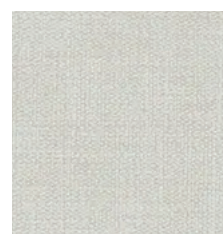
Oxford



Pine



Plum



Putty



Rain



Saddle



Saltwater



Sea Mist



Slate



Spa



Stone Blue



Twine

Construction	Values	Test Method
Content	45% Polyurethane, 55% Recycled Polyester	
Backing Composition	100% GRS Transaction Certified Polyester	ASTM D 751-06
Finished Width	54" min.	
Put-up	30 yards	ASTM D 751-06
Repeat	None	
Cleaning Code	W/S	
Performance	Values	Test Method
Adhesion	4 lbs./in. × 4 lbs./in. min.	ASTM D 751-06
Grab Tensile	80 lbs./in. × 120 lbs./in. min.	ASTM D 751-06
Trap Tear	45 lbs./in. × 50 lbs./in. min.	ASTM D 751-06
Seam Strength	45 lbs./in. × 110 lbs./in. min.	ASTM D 751-06
Stretch at 27# MD (warp) × CD (fill)	6% × 24%	SAE J855, 2002
Flex Resistance	25,000 cycles	ASTM D 2097-91
Blocking	No. 1 - PASS	FTMS 191A-TM5872
Crock Resistance	Dry: 4.5 / Wet: 4.5	AATCC 8-2007
Wyzenbeek Abrasion	250,000 cycles, #10 Cotton Duck	ASTM D 4157-13
Hydrolysis Resistance	24 weeks	ISO 5423: 1992 E
UV Stability	200 hours	ASTM D 4329-05
Cold Crack (5# roller)	-40°F	CFFA-6A

Environmental

No PVC, plasticizers, phthalates, formaldehyde, stabilizers, or heavy metals	No halogenated FR Chemicals - CAL AB2998 compliant
No persistent organic pollutants (POPs)	Conflict mineral free
No DMF or DMFA	Prop 65 compliant
Zero chemical solvents	LBC Red List compliant
No ozone-depleting chemicals	CAL 01350 VOC compliant/low VOCs
No anti-microbial additives	LEED - prequalified
Biocide, BPA, and TRIS Free	RoHS, REACH compliant

Flammability

CA TB117-2013	Pass	NFPA 260	Pass
FMVSS/CMVSS #302	Pass	U.F.A.C. Class I	Pass
IMO A.652(16)8.2	Pass		

Suitable Applications Contract, Healthcare, Hospitality, Residential

Cleaning and Disinfecting

Remove ordinary dirt and smudges with mild soap and water. A 10:1 ratio of water to bleach solution may be used as a disinfectant. Rinse the surface with clean water after disinfecting. Dry with a soft, lint-free cloth or towel. We recommend you use Clorox Healthcare and Clorox Pro products to disinfect Mitchell products in commercial settings.



The Mitchell Group is a compatibility partner with Clorox Healthcare



The Mitchell Group
7040 N. Austin Avenue | Niles, IL 60714
847.647.7300 | mitchellfauxleathers.com