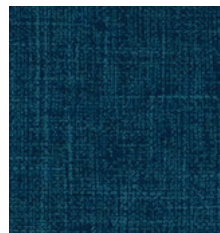




Aqua



Beige



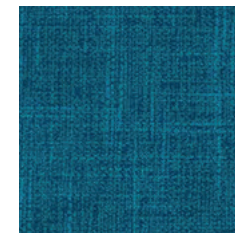
Blue Print



Cayenne



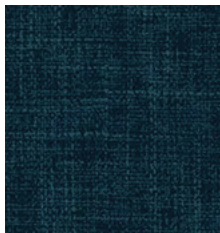
Clay



Denim



Gray



Ink



Linen



Maple



Marigold



Mineral



Mocha



Orange



Oxford



Pine



Plum



Putty



Rain



Saddle



Saltwater



Sea Mist



Slate



Spa



Stone Blue



Twine

Construction	Values	Test Method
Chemical Coating Face	94% Bio-Attributed PU build on Susterra® PDO and 6% Silicone Protection	
Top Finish Protection	Hydro-Sil™ proprietary silicone-based finish for ink and stain resistance	
Backing Composition	100% GRS Transaction Certified Polyester	ASTM D 751-06
Finished Width	54" min.	
Put-up	30 yards	ASTM D 751-06
Repeat	None	
Cleaning Code	W/S	

Performance	Values	Test Method
Adhesion	4 lbs./in. × 4 lbs./in. min.	ASTM D 751-06
Grab Tensile	100 lbs./in. × 180 lbs./in. min.	ASTM D 751-06
Trap Tear	25 lbs./in. × 25 lbs./in. min.	ASTM D 751-06
Seam Strength	60 lbs./in. × 70 lbs./in. min.	ASTM D 751-06
Stretch at 27# MD (warp) × CD (fill)	2% × 9%	SAE J855, 2002
Flex Resistance	25,000 cycles	ASTM D 2097-91
Blocking	No. 1 – PASS	FTMS 191A-TM5872
Crock Resistance	Dry Grade: 4.5 / Wet Grade: 4.5	AATCC 8-2007
Wyzenbeek Abrasion	500,000 cycles, #10 Cotton Duck	ASTM D 4157-13
Hydrolysis Resistance	24 weeks	ISO 1419: 1995
UV Stability	200 hours	ASTM D 4329-05
Cold Crack (5# roller)	-40°F	CFFA-6A
Skin Sensitization	Pass	ISO 10993-10:2021
Irritation	Pass	ISO 10993-23:2021

### Environmental

No PVC, plasticizers, phthalates, formaldehyde, stabilizers, or heavy metals	No halogenated FR Chemicals - CAL AB2998 compliant
No persistent organic pollutants (POPs)	Conflict mineral free
No DMF or DMFA	Prop 65 compliant and LBC Red List compliant
Zero chemical solvents	CAL 01350 VOC compliant / Low VOCs
No ozone-depleting chemicals	RoHS, REACH compliant; LEED - prequalified
No anti-microbial additives	ASTM D6866 verified biobased inputs
Biocide, BPA, and TRIS Free	Meets CFFA 201 testing requirements

### Flammability

CA TB117-2013	Pass	NFPA 260	Pass
IMO A.652(16)8.2	Pass	U.F.A.C. Class I	Pass

**Suitable Applications** Contract, Healthcare, Hospitality, Residential

### Cleaning and Disinfecting

Remove ordinary dirt and smudges with mild soap and water. A 10:1 ratio of water to bleach solution may be used as a disinfectant. Rinse the surface with clean water after disinfecting. Dry with a soft, lint-free cloth or towel. We recommend you use Clorox Healthcare and Clorox Pro products to disinfect Mitchell products in commercial settings.



The Mitchell Group  
7040 N. Austin Avenue | Niles, IL 60714  
847.647.7300 | mitchellfauxleathers.com