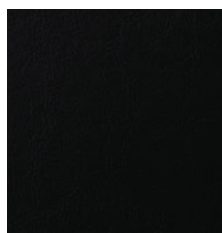


Bark



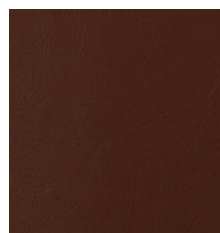
Black



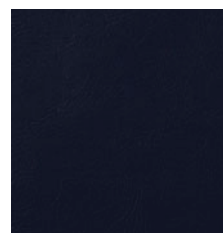
Candy Apple



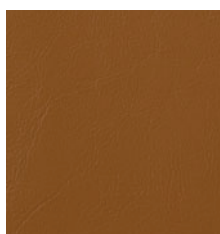
Cerulean



Chocolate Lab



Eggplant



Fawn



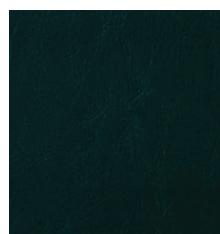
Penny



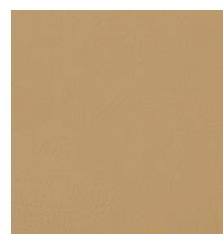
Pomegranate



Sangria



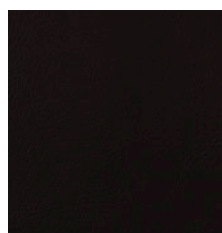
Spruce



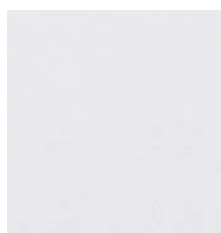
Tortilla



Trout



Walnut



White

Construction	Values	Test Method
Surface Composition	100% PVC	ASTM D 751-06
Backing Composition	100% Polyester	ASTM D 751-06
Weight @ 54"	26.5 oz./yd	ASTM D 751-06
Finished Width	54" min.	ASTM D 751-06
Repeat	None	
Railroaded	No	
Put-up	30 yards	
Cleaning Code	W	

Performance	Values	Test Method
Grab Tensile	90 lbs./in. × 70 lbs./in. min.	ASTM D 751-06
Trap Tear	12 lbs./in. × 12 lbs./in. min.	ASTM D 751-06
Seam Strength	65 lbs./in. × 65 lbs./in. min	ASTM D 751-06
Adhesion	4 lbs./in. × 4 lbs./in. min.	ASTM D 751-06
Stretch @15# (MD×CD)	2% × 7%	ASTM D 751-06
Flex Resistance	25,000 cycles	ASTM D 2097-03(2010)
Blocking	No. 1 – Pass	FTMS 191A-TM5872
Crock Resistance	D-4; W-4	AATCC 8-2007
Wyzenbeek Abrasion	100,000 cycles, #10 cotton duck	ASTM D 4157-92
UV Stability	200 hours	ASTM D 4329-05

Flammability	Environmental
California Technical Bulletin 117-2013, Sec. 1	Pass 1. Phthalate free
FMVSS/CMVSS #302	Pass 2. Lead free
NFPA 260	Pass 3. No FR chemicals
U.F.A.C. Class I	Pass 4. No antimicrobial chemicals

Suitable Applications Contract, Hospitality

Cleaning and Disinfecting

Remove ordinary dirt and smudges with mild soap and water. A 10:1 ratio of water to bleach solution may be used as a disinfectant. Rinse the surface with clean water after disinfecting. Dry with a soft, lint-free cloth or towel. We recommend that you use Clorox Healthcare and Clorox Pro products to disinfect Mitchell products in commercial settings.