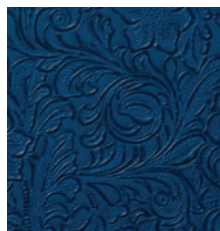




Aegean



Apricot



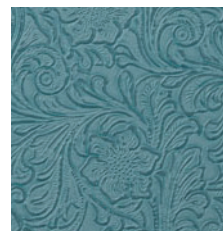
Blueprint



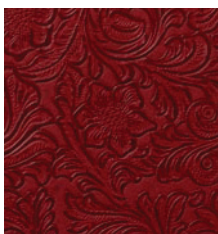
Chamois



Cool Gray



Mediterranean



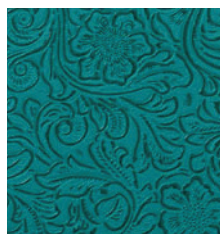
Ruby



Saddle



Shadow Black



Teal



Tobacco Leaf

Construction	Values	Test Method
Surface Composition	100% PVC	
Backing Composition	100% Polyester	ASTM D 751-06
Finished Width	54" min.	ASTM D 751-06
Repeat	V: 8.5" / H: 8.5"	
Railroaded	No	
Put-up	30 yards	
Cleaning Code	W	

Performance	Values	Test Method
Grab Tensile	85 lbs./in. × 90 lbs./in. min.	ASTM D 751-06
Trap Tear	15 lbs./in. × 15 lbs./in. min.	ASTM D 751-06
Seam Strength	65 lbs./in. × 65 lbs./in. min.	ASTM D 751-06
Adhesion	4 lbs./in. × 4 lbs./in. min.	ASTM D 751-06
Stretch @15# (MD×CD)	2% × 9%	ASTM D 751-06
Flex Resistance	25,000 cycles	ASTM D 2097-03(2010)
Blocking	No. 1 - Pass	FTMS 191A-TM5872
Crock Resistance	D-4; W-4	AATCC 8-2007
Wyzenbeek Abrasion	90,000 cycles, #8 cotton duck	ASTM D 4157-92
UV Stability	40 hours (no color change)	ASTM D 4329-05

Flammability		Environmental	
California Technical Bulletin 117-2013, Sec. 1	Pass	1. No anti-microbial additives	
NFPA 260	Pass	2. Does not contain PFAS, PFOA	
U.F.A.C. Class I	Pass	3. Prop 65 compliant	
		4. No chemical flame retardants, CA AB2998 compliant	
		5. RoHS compliant – Phthalate free	

Suitable Applications

Residential

Cleaning and Disinfecting

Remove ordinary dirt and smudges with mild soap and water. A 10:1 ratio of water to bleach solution may be used as a disinfectant. Rinse the surface with clean water after disinfecting. Dry with a soft, lint-free cloth or towel. We recommend that you use Clorox Healthcare and Clorox Pro products to disinfect Mitchell products in commercial settings.