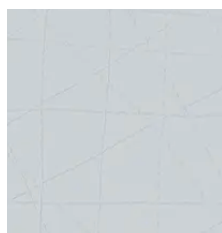




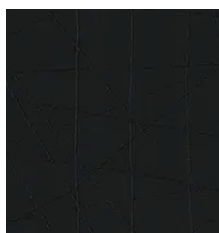
Burlap



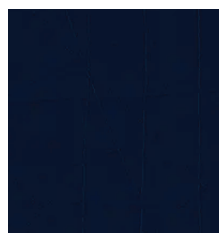
Canvas



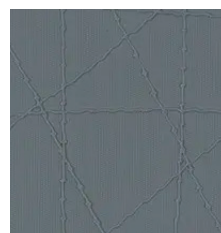
Carolina



Charcoal



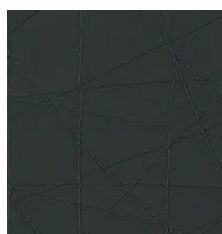
Deep End



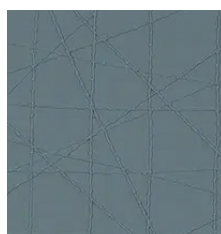
Deep End



Ebony



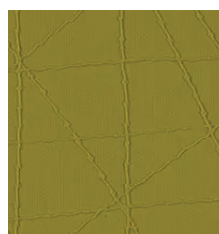
Fathom



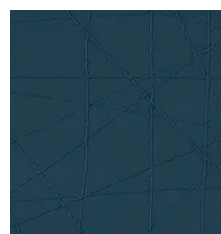
Inlet



Ivory



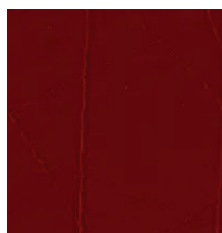
Mojito



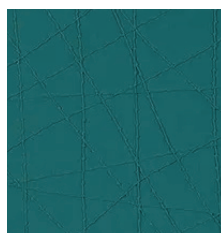
Parrot



Port



Scarlet



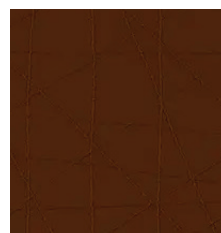
Seafoam



Sesame



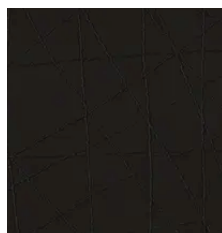
Sprout



Tawny



Teal



Truffle

Construction	Values	Test Method
Surface Composition	100% PVC	ASTM D 751-06
Backing Composition	100% Polyester	ASTM D 751-06
Finished Width	54" min.	ASTM D 751-06
Repeat	None	ASTM D 751-06
Railroaded	No	
Put-up	30 yards	
Cleaning Code	W/S	

Performance	Values	Test Method
Grab Tensile	140 lbs./in. × 140 lbs./in. min.	ASTM D 751-06
Trap Tear	22 lbs./in. × 35 lbs./in. min.	ASTM D 751-06
Seam Strength	40 lbs./in. × 50 lbs./in. min.	ASTM D 751-06
Adhesion	2.4 lbs./in. × 2.5 lbs./in. min.	ASTM D 751-06
Flex Resistance	25,000 Cycles	ASTM D 2097-91
Blocking	No. 1 - Pass	FTMS 191A-TM5872
Wyzenbeek Abrasion	300,000 cycles, #10 cotton duck	ASTM D 4157-13
UV Stability	650 hours	ASTM D 4329-05
Crock Resistance	Dry-4.5; Wet-4.5	AATCC 8-2007
Stretch @ 15# (MD×CD)	15% × 21%	ASTM D 751-06
Cold Cracking (#5 roller)	-40° F	CFFA-6A

Flammability	Environmental
California Technical Bulletin 117-2013, Sec. 1	Pass 1. No anti-microbial additives
IMO A-652(16) 8.2	Pass 2. Does not contain PFAS, PFOA
NFPA 260	Pass 3. Prop 65 compliant
U.F.A.C. Class I	Pass 4. No chemical flame retardants, CA AB2998 compliant

## Suitable Applications Commercial

## Cleaning and Disinfecting

Remove ordinary dirt and smudges with mild soap and water. A 10:1 ratio of water to bleach solution may be used as a disinfectant. Rinse the surface with clean water after disinfecting. Dry with a soft, lint-free cloth or towel. We recommend that you use Clorox Healthcare and Clorox Pro products to disinfect Mitchell products in commercial settings.