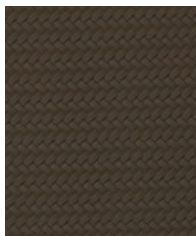


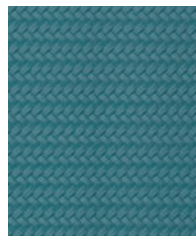
Arctic



Dolphin



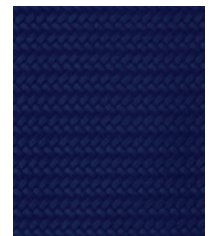
Latte



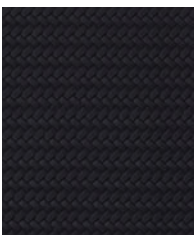
Ocean



Pomona



Sapphire



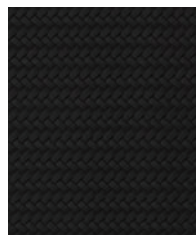
Storm



Sun



Tangelo



Thunder

Construction	Values	Test Method
Surface Composition	100% PVC	
Backing Composition	100% Polyester	ASTM D 751-89
Finished Width	54" min.	ASTM D 751-89
Repeat	None	
Railroaded	No	
Put-up	30 yards	
Cleaning Code	W	

Performance	Values	Test Method
Grab Tensile	80 lbs./in. × 70 lbs./in. min.	ASTM D 5034-09
Trap Tear	6 lbs./in. × 6 lbs./in. min.	ASTM D 5587-07
Seam Strength	30 lbs./in. × 30 lbs./in. min.	ASTM D 1683-07A
Adhesion	3 lbs./in. × 3 lbs./in. min.	ASTM D 751-89
Flex Resistance	30,000 cycles	ASTM D 2097-03
Blocking	No. 1 - Pass	Fed. Std. 191 A , 5872
Crock Resistance	Dry-5; Wet-5	AATCC 8-2013
Wyzenbeek Abrasion	100,000 cycles, #10 Cotton Duck	ASTM D 4157-07
UV Stability	500 hours	ASTM G 154
Cold Crack (Roller Method)	-10°F - Pass	CFFA-6a

Flammability		Environmental
California Technical Bulletin 117-2013, Sec. 1	Pass	1. No anti-microbial additives
IMO A.652(16)8.2	Pass	2. Does not contain PFAS, PFOA
NFPA 260	Pass	3. Prop 65 compliant
U.F.A.C. Class I	Pass	4. No chemical flame retardants, CA AB2998 compliant
		5. RoHS compliant – Phthalate free

Suitable Applications Commercial

Cleaning and Disinfecting

Remove ordinary dirt and smudges with mild soap and water. A 10:1 ratio of water to bleach solution may be used as a disinfectant. Rinse the surface with clean water after disinfecting. Dry with a soft, lint-free cloth or towel. We recommend that you use Clorox Healthcare and Clorox Pro products to disinfect Mitchell products in commercial settings.