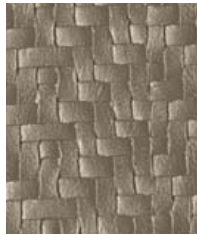




Shark



Mineral



Gold



Walnut



Bronze



Chocolate



Ebony

## Construction

Construction	Values
Surface Composition	100% PVC
Backing Composition	100% Polyester
Finished Width	54" min.
Repeat	None
Railroaded	No
Put-up	30 yards
Cleaning Code	W

## Test Method

ASTM D 751-06
ASTM D 751-06

## Performance

Performance	Minimum Values	Test Method
Grab Tensile	85 lbs./in. × 90 lbs./in. min.	ASTM D 751-06
Trap Tear	15 lbs./in. × 15 lbs./in. min.	ASTM D 751-06
Seam Strength	65 lbs./in. × 65 lbs./in. min.	ASTM D 751-06
Adhesion	4 lbs./in. × 4 lbs./in. min.	ASTM D 751-06
Stretch @ 15# (MD×CD)	2% × 9%	ASTM D 751-06
Flex Resistance	25,000 Cycles	ASTM D 2097-03(2010)
Blocking	No. 1 - Pass	FTMS 191A-TM5872
Crock Resistance	20 cycles - Pass	AATCC 8-2007
Wyzenbeek Abrasion	100,000 cycles, #10 cotton duck	ASTM D 4157-92
UV Stability	40 hours (no color change)	ASTM D 4329-05

## Flammability

California Technical Bulletin 117-2013, Sec. 1	Pass
MVSS-302	Pass
NFPA 260	Pass
U.F.A.C. Class I	Pass

## Environmental

1. No anti-microbial additives
2. Does not contain PFAS, PFOA
3. Prop 65 compliant
4. No chemical flame retardants, CA AB2998 compliant
5. RoHS compliant – Phthalate free

## Suitable Applications

 Commercial

## Cleaning and Disinfecting

Remove ordinary dirt and smudges with mild soap and water. A 10:1 ratio of water to bleach solution may be used as a disinfectant. Rinse the surface with clean water after disinfecting. Dry with a soft, lint-free cloth or towel. We recommend that you use Clorox Healthcare and Clorox Pro products to disinfect Mitchell products in commercial settings.

