





Eggshell



Almond



Eucalyptus



Seafoam



Pumice



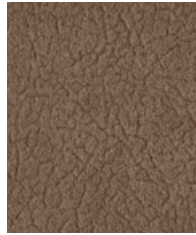
Sky



Silver Fox



Stone



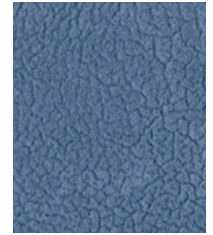
Mink



Apple



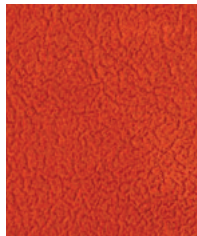
Poppy



Slate



Gunmetal



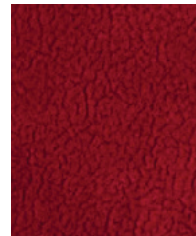
Cinnabar



Henna



Meadow



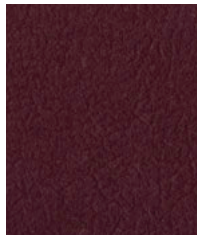
Pomegranate



Peacock



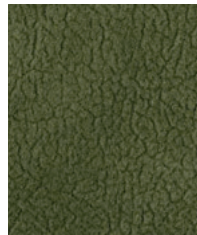
Storm



Raisin



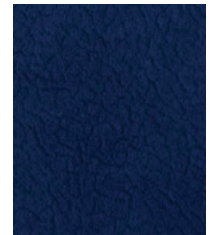
Dark Coffee



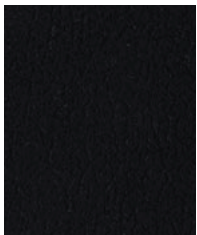
Ivy



Brick



Ink



Onyx

## Construction

	Values	Test Method
Surface Composition	60% Acrylic / 40% Nylon	
Backing Composition	100% Polyester	ASTM D 751-06
Finished Width	54" Width	ASTM D 751-06
Repeat	None	
Railroaded	No	
Put-up	40 yards	
Cleaning Code	W	

## Performance

	Minimum Values	Test Method
Grab Tensile	100 lbs./in. × 100 lbs./in. min.	ASTM D5034
Tear Strength	10 lbs./in. × 10 lbs./in. min.	ASTM D4034
Seam Slippage	25 lbs./in. × 25 lbs./in. min.	ASTM D2261
Crock Resistance	Wet-5; Dry-5	AATCC 8
Wyzenbeek Abrasion	200,000 cycles, #10 cotton duck	ASTM D 4157
UV Stability	40 hours (4-5)	AATCC 16.3-2012

## Flammability

California Technical Bulletin 117-2013, Sec. 1	Pass
FMVSS 302 / CMVSS 302	Pass
I.M.O. A.652(16) 8.2 & 8.3	Pass
NFPA 260	Pass
U.F.A.C. Class I	Pass

## Environmental

1. No anti-microbial additives
2. Does not contain PFAS, PFOA
3. Prop 65 compliant
4. No chemical flame retardants, CA AB2998 compliant
5. REACH, RoHS, and LEED compliant

## Suitable Applications Commercial

## Cleaning and Disinfecting

Remove ordinary dirt and smudges with mild soap and water. A 10:1 ratio of water to bleach solution may be used as a disinfectant. Rinse the surface with clean water after disinfecting. Dry with a soft, lint-free cloth or towel. We recommend that you use Clorox Healthcare and Clorox Pro products to disinfect Mitchell products in commercial settings.

