

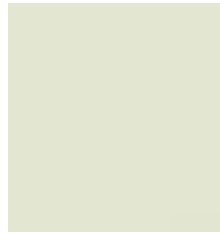
Bark



Carmine



Carrot



Cloud



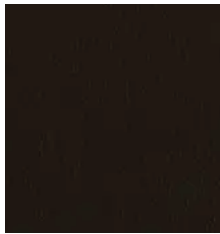
Coal



Coffee



Ecu



Espresso



Fern



Flay



Forest



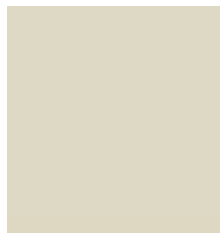
Fossil



Laurel



Meadow



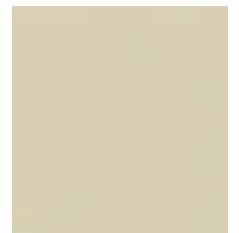
Navajo



Neutral



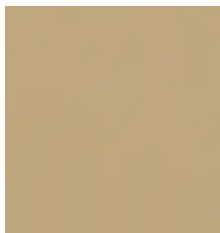
Oyster



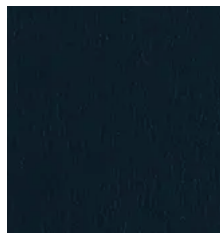
Sand



Sapphire



Sepia



Space



Umber

<b>Construction</b>	<b>Values</b>	<b>Test Method</b>
Top Finish Protection	Silicone	
Surface Composition	100% Polyurethane	
Backing Composition	50% Nylon / 50% Polyurethane	ASTM D 751-06
Finished Width	54" Width	ASTM D 751-06
Repeat	None	
Railroaded	No	
Put-up	30 yards	
Cleaning Code	W	
<b>Performance</b>	<b>Values</b>	<b>Test Method</b>
Grab Tensile	120 lbs./in. × 120 lbs./in. min.	ASTM D 751-06
Trap Tear	40 lbs./in. × 40 lbs./in. min.	ASTM D 751-06
Seam Strength	120 lbs./in. × 120 lbs./in. min.	ASTM D 751-06
Adhesion	5 lbs./in. × 5 lbs./in. min.	ASTM D 751-06
Stretch @ 15# (MD×CD)	4% × 12%	ASTM D 751-06
Flex Resistance	25,000 cycles	ASTM D 2097-91
Blocking	No. 1 - Pass	FTMS 191A-TM5872
Crock Resistance	Wet-4; Dry-4	AATCC 8-2007
Hydrolysis Resistance	7 weeks	ASTM D 3690-02; ISO 5423: 1992 E
Wyzenbeek Abrasion	100,000 cycles, #10 cotton duck	ASTM D 4157-13
UV Stability	200 hours	AATCC 16
Cold Crack (#5 roller)	-20°F	CFFA-6a

<b>Flammability</b>		<b>Environmental</b>
California Technical Bulletin 117-2013, Sec. 1	Pass	1. No anti-microbial additives
NFPA 260	Pass	2. Does not contain PFAS, PFOA
U.F.A.C. Class I	Pass	3. Prop 65 compliant
		4. No chemical flame retardants
		5. REACH, RoHS, and LEED compliant

**Suitable Applications** Hospitality, Contract, Residential

### **Cleaning and Disinfecting**

Remove ordinary dirt and smudges with mild soap and water. A 10:1 ratio of water to bleach solution may be used as a disinfectant. Rinse the surface with clean water after disinfecting. Dry with a soft, lint-free cloth or towel. We recommend that you use Clorox Healthcare and Clorox Pro products to disinfect Mitchell products in commercial settings.



The Mitchell Group is a compatibility partner with Clorox Healthcare

The Mitchell Group  
7040 N. Austin Avenue | Niles, IL 60714  
847.647.7300 | mitchellfauxleathers.com