

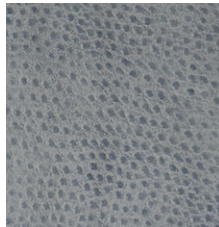
Bisque



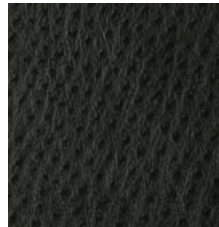
Cement



Cobblestone



Dove



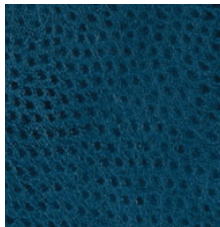
Ebony



Fawn



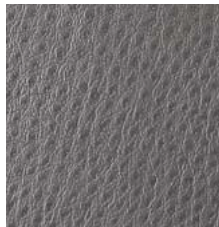
Flax



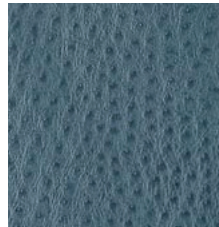
Lagoon



Pearl



Quartz



Sky

Construction	Values	Test Method
Surface Composition	100% Polyurethane	
Backing Composition	100% Polyester	ASTM D 751-06
Finished Width	54" min.	ASTM D 751-06
Repeat	None	
Railroaded	No	
Put-up	40 yards	
Cleaning Code	W	

Performance	Values	Test Method
Grab Tensile	80 lbs./in. × 70 lbs./in. min.	ASTM D 5034-09
Trap Tear	15 lbs./in. × 12 lbs./in. min.	ASTM D 2261-11
Seam Strength	60 lbs./in. × 60 lbs./in. min.	ASTM D 1683-11a
Adhesion	4 lbs./in. × 4 lbs./in. min.	ASTM D 751-06
Stretch @ 15# (MD×CD)	2% × 7%	ASTM D 751-06
Flex Resistance	25,000 Cycles	ASTM D 2097-03(2010)
Blocking	No. 1 - Pass	FTMS 191A-TM5872
Crock Resistance	D-4; W-4	AATCC 8-2007
Wyzenbeek Abrasion	100,000 cycles, #10 cotton duck	ASTM D 4157-92
Hydrolysis Resistance	7 weeks	ISO 1419: 1995 E
UV Stability	150 hours	ASTM D 4329-05

Flammability		Environmental
California Technical Bulletin 117-2013, Sec. 1	Pass	1. No anti-microbial additives
NFPA 260	Pass	2. Does not contain PFAS, PFOA
U.F.A.C. Class I	Pass	3. Prop 65 compliant
		4. No chemical flame retardants, CA AB2998 compliant
		5. REACH, RoHS, and LEED compliant

**Suitable Applications** Commercial, Residential

## Cleaning and Disinfecting

Remove ordinary dirt and smudges with mild soap and water. A 10:1 ratio of water to bleach solution may be used as a disinfectant. Rinse the surface with clean water after disinfecting. Dry with a soft, lint-free cloth or towel. We recommend that you use Clorox Healthcare and Clorox Pro products to disinfect Mitchell products in commercial settings.



The Mitchell Group is a compatibility partner with Clorox Healthcare

The Mitchell Group  
7040 N. Austin Avenue | Niles, IL 60714  
847.647.7300 | mitchellfauxleathers.com