

Bark



Carmine



Carrot



Cloud



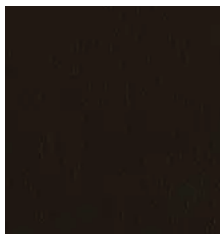
Coal



Coffee



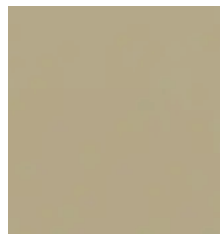
Ecu



Espresso



Fern



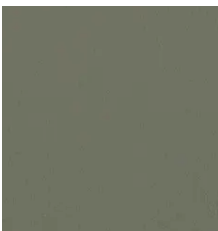
Flay



Forest



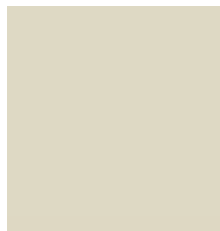
Fossil



Laurel



Meadow



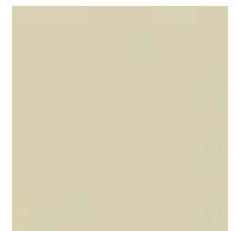
Navajo



Neutral



Oyster



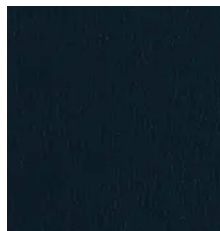
Sand



Sapphire



Sepia



Space



Umber

| Construction | Values | Test Method |
|------------------------|----------------------------------|----------------------------------|
| Top Finish Protection | Silicone | |
| Surface Composition | 100% Polyurethane | |
| Backing Composition | 50% Nylon / 50% Polyurethane | ASTM D 751-06 |
| Finished Width | 54" Width | ASTM D 751-06 |
| Repeat | None | |
| Railroaded | No | |
| Put-up | 30 yards | |
| Cleaning Code | W | |
| Performance | Values | Test Method |
| Grab Tensile | 120 lbs./in. × 120 lbs./in. min. | ASTM D 751-06 |
| Trap Tear | 40 lbs./in. × 40 lbs./in. min. | ASTM D 751-06 |
| Seam Strength | 120 lbs./in. × 120 lbs./in. min. | ASTM D 751-06 |
| Adhesion | 5 lbs./in. × 5 lbs./in. min. | ASTM D 751-06 |
| Stretch @ 15# (MD×CD) | 4% × 12% | ASTM D 751-06 |
| Flex Resistance | 25,000 cycles | ASTM D 2097-91 |
| Blocking | No. 1 - Pass | FTMS 191A-TM5872 |
| Crock Resistance | Wet-4; Dry-4 | AATCC 8-2007 |
| Hydrolysis Resistance | 7 weeks | ASTM D 3690-02; ISO 5423: 1992 E |
| Wyzenbeek Abrasion | 100,000 cycles, #10 cotton duck | ASTM D 4157-13 |
| UV Stability | 200 hours | AATCC 16 |
| Mildew Resistance | Pass | ASTM G-21 |
| Anti-Bacterial | Pass | AATCC 147-2004 |
| Cold Crack (#5 roller) | -20°F | CFFA-6a |

| Flammability | Environmental | |
|--|---------------|------------------------------------|
| California Technical Bulletin 117-2013, Sec. 1 | Pass | 1. No anti-microbial additives |
| NFPA 260 | Pass | 2. Does not contain PFAS, PFOA |
| U.F.A.C. Class I | Pass | 3. Prop 65 compliant |
| | | 4. No chemical flame retardants |
| | | 5. REACH, RoHS, and LEED compliant |

Suitable Applications Hospitality, Contract, Residential

Cleaning and Disinfecting

Remove ordinary dirt and smudges with mild soap and water. A 10:1 ratio of water to bleach solution may be used as a disinfectant. Rinse the surface with clean water after disinfecting. Dry with a soft, lint-free cloth or towel. We recommend that you use Clorox Healthcare and Clorox Pro products to disinfect Mitchell products in commercial settings.

