

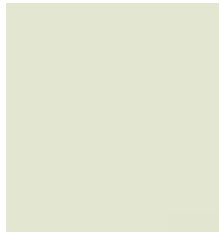
Bark



Carmine



Carrot



Cloud



Coal



Coffee



Ecru



Espresso



Fern



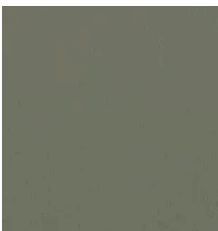
Flay



Forest



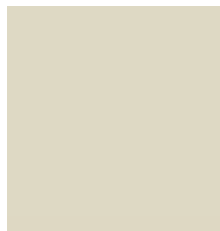
Fossil



Laurel



Meadow



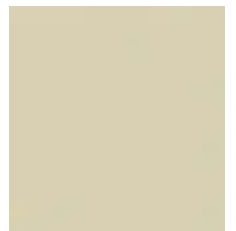
Navajo



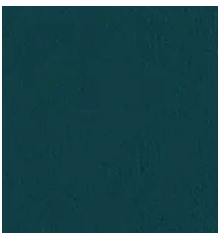
Neutral



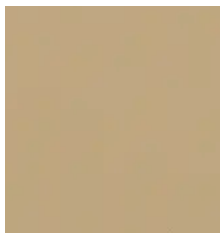
Oyster



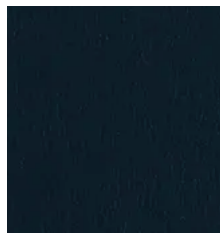
Sand



Sapphire



Sepia



Space



Umber

Construction	Values	Test Method
Top Finish Protection	Silicone	
Surface Composition	100% Polyurethane	
Backing Composition	50% Nylon / 50% Polyurethane	ASTM D 751-06
Finished Width	54" Width	ASTM D 751-06
Repeat	None	
Railroaded	No	
Put-up	30 yards	
Cleaning Code	W	
Performance	Values	Test Method
Grab Tensile	120 lbs./in. × 120 lbs./in. min.	ASTM D 751-06
Trap Tear	40 lbs./in. × 40 lbs./in. min.	ASTM D 751-06
Seam Strength	120 lbs./in. × 120 lbs./in. min.	ASTM D 751-06
Adhesion	5 lbs./in. × 5 lbs./in. min.	ASTM D 751-06
Stretch @ 15# (MD×CD)	4% × 12%	ASTM D 751-06
Flex Resistance	25,000 cycles	ASTM D 2097-91
Blocking	No. 1 - Pass	FTMS 191A-TM5872
Crock Resistance	Wet-4; Dry-4	AATCC 8-2007
Hydrolysis Resistance	7 weeks	ASTM D 3690-02; ISO 5423: 1992 E
Wyzenbeek Abrasion	100,000 cycles, #10 cotton duck	ASTM D 4157-13
UV Stability	200 hours	AATCC 16
Cold Crack (#5 roller)	-20°F	CFFA-6A

Flammability

California Technical Bulletin 117-2013, Sec. 1	Pass
NFPA 260	Pass
U.F.A.C. Class I	Pass

Environmental

1. No anti-microbial additives
2. Does not contain PFAS, PFOA
3. Prop 65 compliant
4. No chemical flame retardants
5. REACH, RoHS, and LEED compliant

Suitable Applications Hospitality, Contract, Residential

Cleaning and Disinfecting

Remove ordinary dirt and smudges with mild soap and water. A 10:1 ratio of water to bleach solution may be used as a disinfectant. Rinse the surface with clean water after disinfecting. Dry with a soft, lint-free cloth or towel. We recommend that you use Clorox Healthcare and Clorox Pro products to disinfect Mitchell products in commercial settings.

